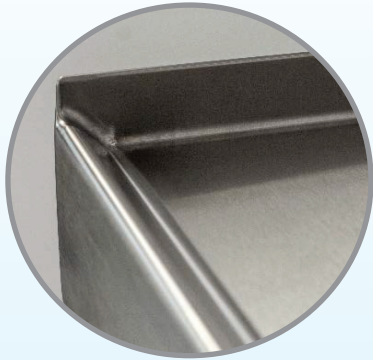


90° Side Edges & Marine Edges

Optimize surface area, increases equipment stability, and prevents drips and spills.



Integrated Ceramic Heat Shield

Ensures colder temperatures, lower utility costs, and preserves food safety.



Heavy Duty Drawers

Constructed of 14 gauge stainless steel, drawer slides have a load capacity of 250 lbs.



HOSHIZAKI

REFRIGERATED EQUIPMENT STANDS

CRES SERIES



CRES49

Durable Cabinet Construction

The cabinet front, drawers, sides, top and interior floor are constructed of heavy gauge, durable stainless steel.



Digital Controller & Temp. Alarm

Maintain optimum cabinet temperatures between 33°F - 41°F. LED display is adjustable to °F/°C.



6" Deep Pans & Easy Removal

Each drawer accommodates full sized pans up to 6" deep. Drawer rails include finger cut outs for easy pan removal.



More Information



hoshizakiamerica.com



Item #50009 | 04-03-2017

See Reverse



REFRIGERATED EQUIPMENT STANDS

Key Feature Comparison



CRES72

	Hoshizaki CRES Series	Traulsen TE Series	Delfield F17C Series	True TRCB Series	Beverage-Air WTRCS Series	Continental DL Series	Turbo Air TCBE Series
90° side edges maximize top surface area for equipment. Marine edges on both front and back allow for easy cleaning	✓						
Heavy duty 16 gauge 304 stainless steel top	✓	✓			✓		✓
Integrated ceramic heat shield	✓						
250 lb. load capacity rating for each drawer slide	✓					✓	
All drawers accommodate full size 6" deep pans	✓	✓				✓	
Drawer rail design provides easy pan removal	✓						
Digital controller (°C/°F) with LED display and temperature alarms	✓	✓	✓				