



# Ice Machine Cleaning & Sanitizing

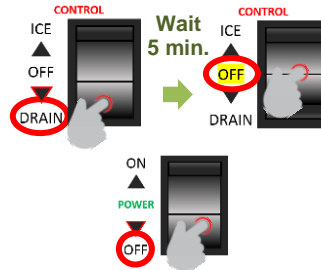
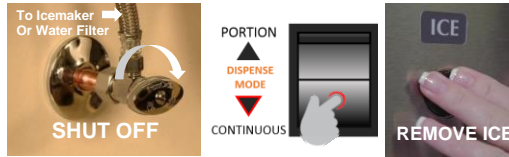
HOSHIZAKI

DCM-300BAH(-OS)  
DCM-500BAH(-OS)  
DCM-500BWH(-OS)

The icemaker/dispenser must be cleaned & sanitized at least twice a year.

## Cleaning Prep:

- 1 Close the water supply line shut-off valve, move the **dispense mode switch** to **CONTINUOUS** and dispense all the ice from the storage bin.
- 2 Move the **control switch** to **DRAIN**. Allow the icemaker to drain for **5 minutes**. Move the **control switch** to **OFF**.  
If the unit is running, there will be a 2.5 minute delay before the drain valve will open.
- 3 Remove the **Front Panel\*** and **Top Panel**. Move the **power switch** to **OFF**.  
\*Push-button models: Take care in disconnecting the button connector.



**Do not** leave icemaker unattended when panels are off



AMMONIA Cleaners

## Sanitizing:

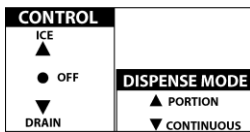
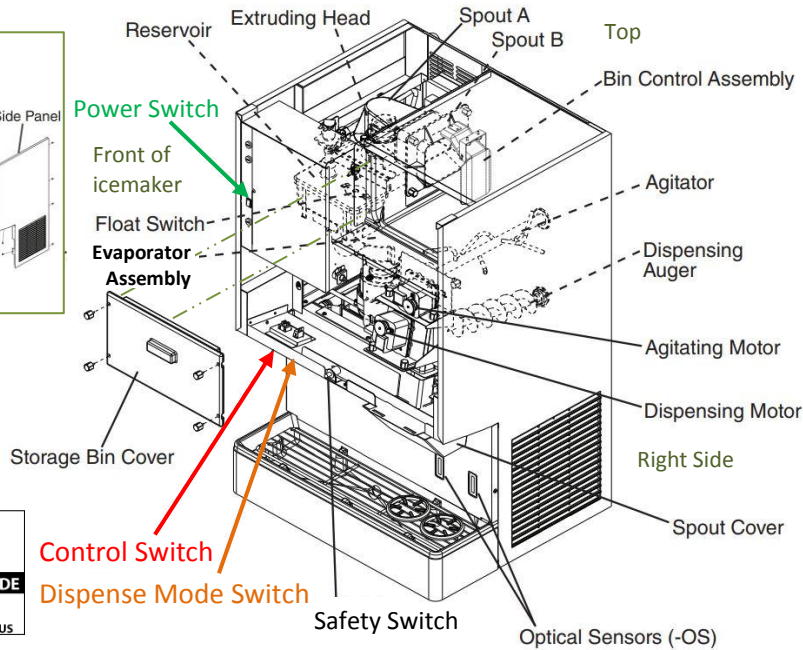
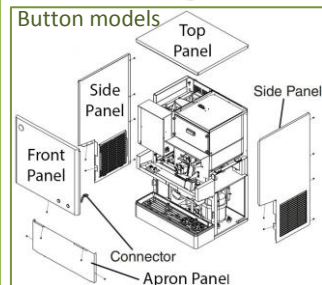
- Dilute 5.25% chlorine bleach<sup>‡</sup> with warm water (see Table below)

DCM-300, DCM-500	
Bleach	0.82 fl. oz (25 ml)
Warm Water	1.6 gal. (6.0 l)

<sup>‡</sup> Use bleach without additives.

- 12 Remove the front and top panels
- 13 Move the power switch to OFF
- 14 Remove the storage bin cover, spout B, then spout A
- 15 Pour the sanitizing solution over the extruding head until solution starts to overflow into the drain pan
- 16 Clean, rinse, and replace spout A, spout B, and the storage bin cover
- 17 Allow the icemaker to soak for 10 minutes
- 18 Move **power switch** to ON, replace the panels
- 19 Move the **control switch** to ICE
- 20 Make ice with the solution until it stops, dispose of ice
- 21 Move the **control switch** to DRAIN
- 22 Allow the icemaker to drain for 5 minutes

## Cleaning:



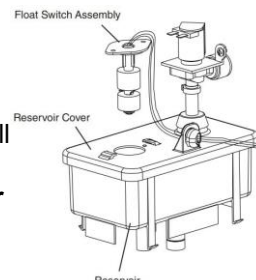
- 4 Dilute Hoshizaki Scale Away with warm water (see Table below). Remove the **Storage Bin Cover\*\***, **Spout B**, then **Spout A**. Pour cleaning solution into the **Extruding Head** until the **Evaporator Assembly** and the **Reservoir** are full and the solution overflows into the **Drain Pan**. Replace **Spout A & B**, and the **Storage Bin Cover**.

DCM-300, DCM-500	
Scale Away	9.6 fl. oz (0.29 l)
Warm Water	1.6 gal. (6.0 l)

Allow the icemaker to soak for **10 minutes**.

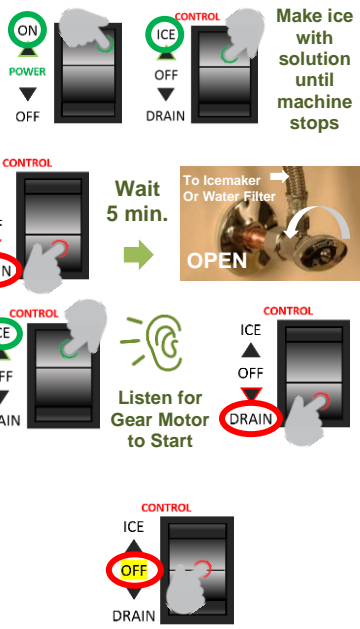
\*\*Use a 15mm socket to easily remove thumb screws.

- 5 In bad water conditions, a more thorough cleaning may be required. Remove the **Float Switch** from the **Reservoir** cover. Clean the **Float Switch** with the solution, rinse thoroughly with clean water, and replace it back in the cover. In addition to following Step 4, place a clamp on the **Reservoir** hose that will block the flow to the **evaporator assembly**. Pour additional cleaning solution over the **Extruding Head** until the **Evaporator Assembly** is full. Allow to soak, remove the clamp before operation. Otherwise, continue to Step 6.



↳ continued on the back...

- 6 Move the **power switch** to **ON**. Replace the **Top Panel** and **Front Panel†**. Move the **control switch** to **ICE**. Make ice using the cleaning solution until it stops.  
† This unit will not run if the safety switch is not engaged.
- 7 Move the **control switch** to **DRAIN**. Allow the icemaker to drain for **5 minutes**. Open the water supply line shut-off valve to supply water to the icemaker.
- 8 Move the **control switch** to **ICE**. After the gear motor starts, move the **control switch** to **DRAIN**. Allow the icemaker to drain for **5 minutes**.



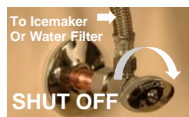
Make ice with solution until machine stops



The icemaker might make a noise/squealing when first started due to scale removal from auger/evaporator. This is normal in bad water conditions and will subside after 20 minutes.

- 9 Move the **control switch** to **OFF**.

- 10 Close the icemaker water supply line shut-off valve.



Continue to **Sanitation – Step 11** on front...

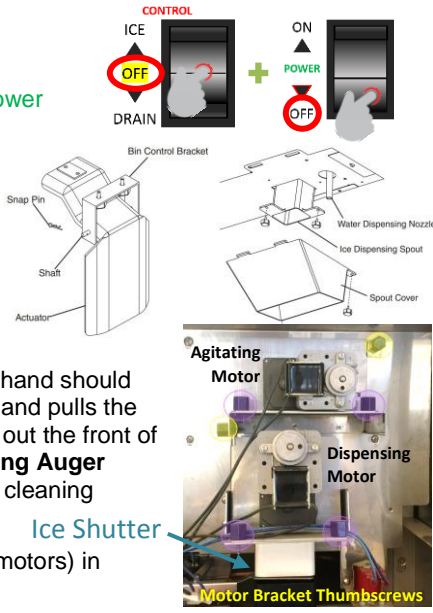
- ↓ sanitizing continued...
- 18 Move **control switch** to **ICE**
  - 19 Open the icemaker water supply line shut-off valve
  - 20 After the gear motor starts, move **control switch** to **DRAIN**
  - 21 Allow the icemaker to drain for 5 minutes
  - 22 Move **control switch** to **ICE**
  - 23 Allow the icemaker to run for 30 minutes, then clean and sanitize the dispensing components – Step 21



## Clean Dispenser Components:

DCM-300, DCM-500	
Scale Away	9.6 fl. oz (0.29 l)
Warm Water	1.6 gal. (6.0 l)

- 21 Dilute Hoshizaki Scale Away with warm water (see Table). Move the **control switch** to **OFF**.
- 22 Remove the **Front Panel** and **Top Panel**, move the **power switch** to **OFF**.
- 23 Remove the **Storage Bin Cover\*\***, **Bin Control Assembly** (snap pin, shaft, and actuator), **Spout B**, **Spout A**, **Spout Gaskets**, **Spout Cover**, **Ice Dispensing Spout\*\***, and then the **Water Dispensing Nozzle**. Place in bin with cleaning solution.
- 24 Remove **Motor Bracket Thumbscrews\*\*** first from the **vertical** plane and then from **horizontal** plane. One hand should hold the agitator or dispensing auger, while the other hand pulls the corresponding **Agitating Motor** or **Dispensing Motor** out the front of the icemaker. Now remove the **Agitator** and **Dispensing Auger** from the ice storage bin and place them in the bin with cleaning solution. \*\*Use a 15mm socket to easily remove thumb screws.
- 25 Soak the parts removed in **Steps 23 – 24** (except the motors) in cleaning solution for **15 minutes**.
- 26 Wipe the exterior of optical-sensors or push buttons with the cleaning solution and then a clean damp cloth. Wipe the **ice shutter** (located above the ice dispensing spout) thoroughly with a clean cloth.



Ice Shutter

Continue to **Sanitation – Step 27** to right...

## Sanitize Dispenser Components:

- 27 Dilute 5.25% chlorine bleach† with warm water and place it in another bin (see Table below)

DCM-300, DCM-500	
Bleach	0.82 fl. oz (25 ml)
Warm Water	1.6 gal. (6.0 l)

† Use bleach without additives.

- 28 Soak the parts removed in **Steps 23–24** (except the motors) in sanitizing solution for 15 minutes. Rinse all the parts thoroughly with clean water
- 29 Reassemble and replace all parts removed in **Steps 23-24** (except storage bin cover)
- 30 Pour warm water into the storage bin to melt any remaining ice
- 31 Clean the storage bin liner and cover with dish soap and a damp cloth. Rinse thoroughly with clean water
- 32 Replace the storage bin cover
- 33 Move the **power switch** to **ON**, then replace top and front panels.
- 34 Move **control switch** to **ICE**, to start the automatic icemaking process
- 35 Set **dispense mode switch** to preference (portion or continuous)

### DOWNLOAD COMPLETE INSTRUCTION MANUAL:



[hoshizakiamerica.com/manuals](http://hoshizakiamerica.com/manuals)

Type in the model number of your icemaker (including dashes) to download manuals

### CLEANING SCHEDULE

- **Air Filter** Dish soap, rinse well
  - **Water Filters** Check psi, change if req'd
  - **Exterior** Dish soap & damp cloth
  - **Pan/Gear Drain** Clear w/ warm water + brush
  - **Icemaker/Dispenser** Follow these instructions
  - **Water Supply Inlet** Clean inlet screen/valves. Inspect seal bolts/ bearing wear. Tighten or replace
  - **Extruding Head** Inspect. Replace if req'd
  - **Water Hoses** Inspect. Replace if req'd
- WEEKLY | ● MONTHLY | ● YEARLY

### ATTENTION!

**DO NOT** use ammonia type cleaners. Can cause damage to icemaker

**WEAR** liquid-proof gloves and goggles to protect skin & eyes from cleaning & sanitizing chemicals