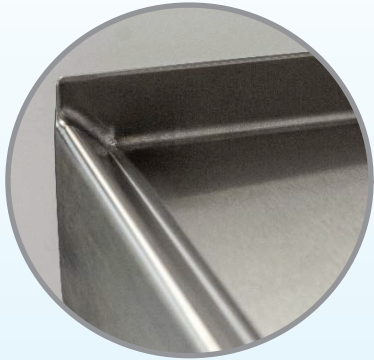


### 90° Side Edges & Marine Edges

Optimize surface area, increases equipment stability, and prevents drips and spills.



### Integrated Ceramic Heat Shield

Ensures colder temperatures, lower utility costs, and preserves food safety.



### Heavy Duty Drawers

Constructed of 14 gauge stainless steel, drawer slides have a load capacity of 250 lbs.



# HOSHIZAKI

REFRIGERATED EQUIPMENT STANDS

## CRES SERIES

### Durable Cabinet Construction

The cabinet front, drawers, sides, top and interior floor are constructed of heavy gauge, durable stainless steel.



### Digital Controller & Temp. Alarm

Maintain optimum cabinet temperatures between 33°F - 41°F. LED display is adjustable to °F/°C.



### 6" Deep Pans & Easy Removal

Each drawer accommodates full sized pans up to 6" deep. Drawer rails include finger cut outs for easy pan removal.



CRES49



More Information



[hoshizakiamerica.com](http://hoshizakiamerica.com)



Item #50009 | 04-03-2017

See Reverse



# REFRIGERATED EQUIPMENT STANDS

## Key Feature Comparison



CRES72

	Hoshizaki CRES Series	Traulsen TE Series	Delfield F17C Series	True TRCB Series	Beverage-Air WTRCS Series	Continental DL Series	Turbo Air TCBE Series
90° side edges maximize top surface area for equipment. Marine edges on both front and back allow for easy cleaning	✓						
Heavy duty 16 gauge 304 stainless steel top	✓	✓			✓		✓
Integrated ceramic heat shield	✓						
250 lb. load capacity rating for each drawer slide	✓					✓	
All drawers accommodate full size 6" deep pans	✓	✓				✓	
Drawer rail design provides easy pan removal	✓						
Digital controller (°C/°F) with LED display and temperature alarms	✓	✓	✓				