



Ice Machine Cleaning & Sanitizing

HOSHIZAKI

KM-201BAH
KM-260BAH
KM-201BWH
KM-260BWH

The ice maker must be cleaned & sanitized at least once a year.

Cleaning Procedure

WARNING
DO NOT leave icemaker unattended when panels are off

AMMONIA Cleaners

1

Danger: Causes severe skin burns and eye damage. Observe precautions on bottle.

Hoshizaki ScaleAway

Water
5 fl. oz. 148 ml
1 GAL 3.8L

2

3

ICE OFF SERVICE
3 min.

then...
ICE OFF SERVICE

4

then...

ICE OFF SERVICE
WASH
CIRCULATE
DRAIN

1 2 3

5

2 min.

then...

ICE OFF SERVICE

6

7

30 min.

then...

ICE OFF SERVICE

8

ICE OFF SERVICE
WASH
CIRCULATE
DRAIN

2 1

9

ICE OFF SERVICE

10

then...

wait 3 min.

ICE OFF SERVICE
WASH
CIRCULATE
DRAIN

2 1

11

wait 5 min.

then...

ICE OFF SERVICE

12

ICE OFF SERVICE
WASH
CIRCULATE
DRAIN

2 1

13

14

15

16

17

18

19

Hoshizaki ScaleAway

Water
5 fl. oz. 148 ml
1 GAL 3.8L

20

21

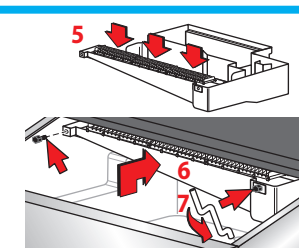
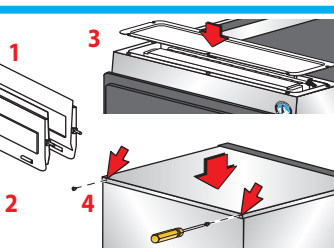
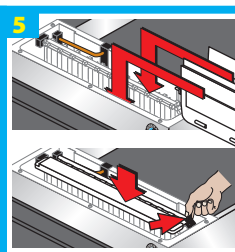
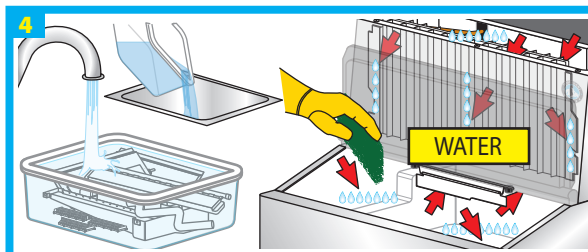
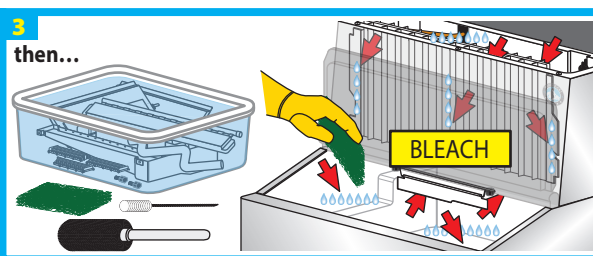
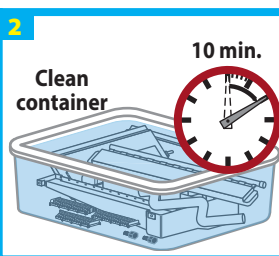
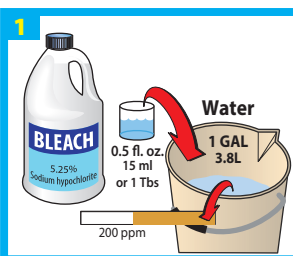
IMPORTANT:
Rinse parts and bin **THOROUGHLY** with water

SOLUTION

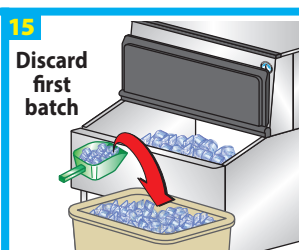
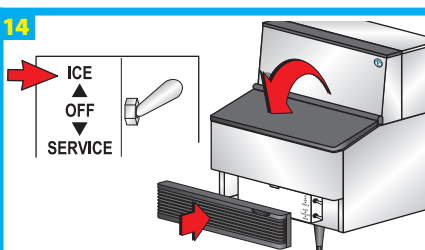
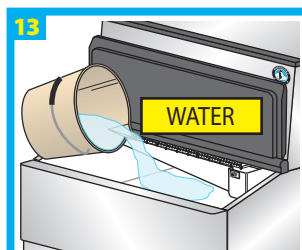
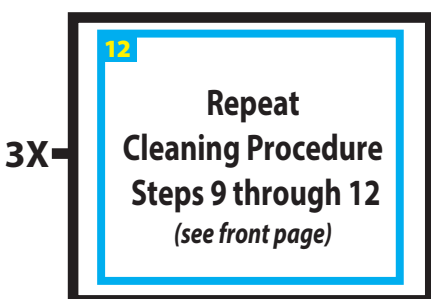
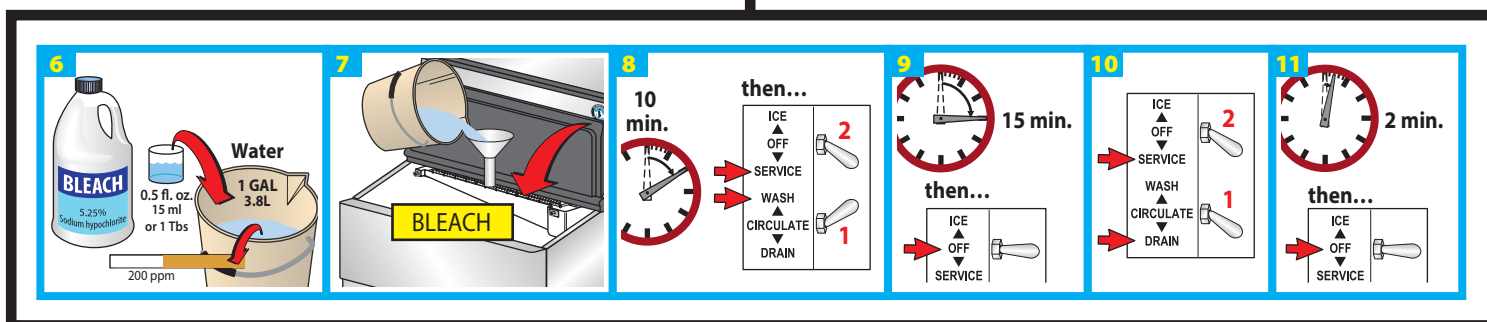
WATER

Proceed to Sanitizing Procedure on reverse side

Sanitizing Procedure



2X



CLEANING SCHEDULE

- Scoop Dish soap, rinse well
- Water Filters Check psi; change if req'd
- Exterior Dish soap & damp cloth
- Bin Door/Top Kit Warm water & clean cloth
- Ice Maker/Bin Follow these instructions
- Water Supply Inlet Clean inlet screen
- Condenser Inspect. Clean with brush
- Water Hoses Inspect. Replace if req'd

● DAILY | ● MONTHLY | ● YEARLY

**THIS IS A QUICK
REFERENCE GUIDE ONLY.
FOR COMPLETE CLEANING
AND SANITIZING
INSTRUCTIONS
DOWNLOAD OUR
COMPLETE INSTRUCTION
MANUAL.**



**Download complete
instruction manual**

Type in the model number of your ice machine
(including dashes) to download manuals

Tech Support:

1.800.233.1940

hoshizakiamerica.com/support