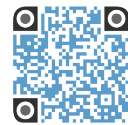




# RM-7-HC

## Glass Door Merchandiser with Swing Door



RM-7-HC  
03/09/18  
Item # 13408

Item #: \_\_\_\_\_

Project: \_\_\_\_\_

Qty: \_\_\_\_\_

AIA#: \_\_\_\_\_

**W x D x H**  
21.25" x 25" x 37.75"

**RM-7-HC**



### Dimensions / Capacity

### One Section RM-7-HC

Interior Storage Capacity (CF)	5.97 ft <sup>3</sup>
Overall Width x Depth	21.25" x 25"
Depth with door open	44.88"
Height	37.75"
Adjustable Shelves	2 adjustable, 1 floor shelf
Shelf Dimensions (W x D)	17.75" x 20.75"
Floor Shelf Dimensions (W x D)	18" x 9.25"
Crated Shipping Weight	155 lbs.
Crated Width x Depth x Height	30" x 30" x 42"

### Electrical / Refrigeration

### One Section RM-7-HC

Voltage	115/60/1
HACR Breaker	15.0 Amps
Electrical Connection (NEMA)	5-15P Ⓢ
Voltage Range	104-126
Ambient Temp. Range	60° to 86°F
Control Setpoint Range	34° to 40°F
Amperage	3.2
Energy Consumption (kWh/day) @ASHRAE	1.39
Approx. Nominal Compres. BTU/HR (HP)	582 (1/8HP)
Refrigerant	R290

### Options

- Floor Epoxy Shelf (HS-5344)
- Epoxy Shelf (HS-5343)

### Warranty

- \* 3 Year - parts and Labor on entire machine.
  - 5 Year - Parts on Compressor
- Valid in United States, Canada, Puerto Rico and U.S. Territories. Contact factory for warranty in other countries.

## Features

- ▶ Curved vertical corners with silver aluminum exterior provide enhanced product display
- ▶ Energy efficient vertical LED interior lights illuminate products on display
- ▶ Forced-air evaporator for quick temperature pull-down

- Large glass door are energy efficient low E multi pane glass
- Spring assisted self-closing door with stay open feature
- (3) epoxy coated wire shelves are standard
- Stackable (three units high) to conserve warehouse floor space
- Refrigerant flow is controlled with a capillary tube
- 2 inch leveling legs standard
- Three years parts and labor warranty
- Five year compressor warranty
- 8 ft. cord and plug

### Capacity:

- 20 oz. bottles: 102
- 12 oz. bottles: 217



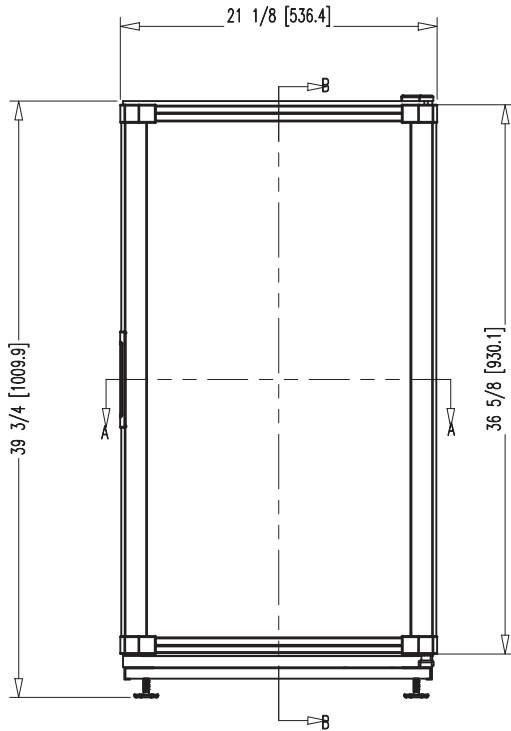
# RM-7-HC

## Glass Door Merchandiser with Swing Door

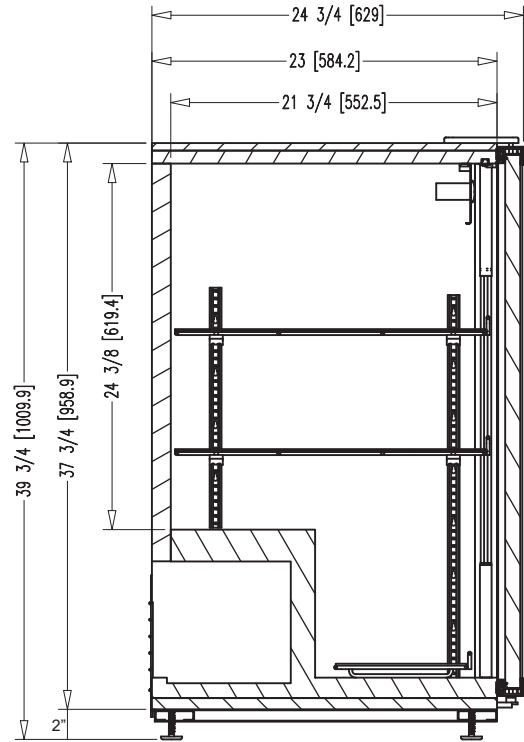


RM-7-HC  
03/09/18  
Item # 13408

### FRONT VIEW

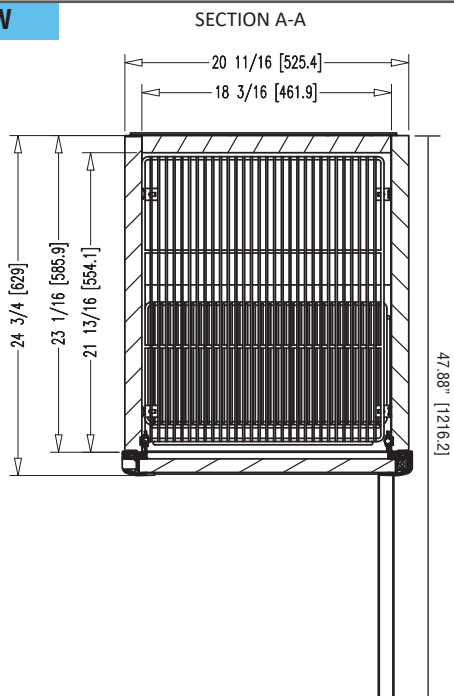


### SIDE VIEW



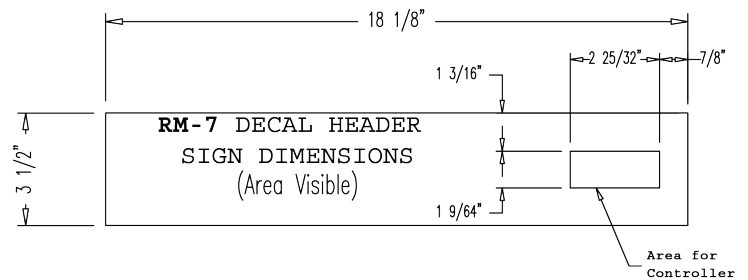
SECTION B-B

### PLAN VIEW



SECTION A-A

### HEADER DIMS



#### Graphic Requirements:

- 360 dpi resolution. Scale 1=1
- Colors for CMYK process
- Image with 1/4" of excess by side
- Graphics must be saved in photoshop (with layers)  
- (or your sign company file type requirements)
- Include a full color print out

#### Material Requirements:

- 3M exterior grade UV resistant vinyl adhesive

Note: Texts and important parts of the image should be within the visible area. The visible area is illustrated by dotted lines when it applies.