



# HOSHIZAKI

## Parts List

Modular Flaker

Models

F-450MAJ(-C)



[hoshizakiamerica.com](http://hoshizakiamerica.com)

Number: 71367  
Issued: 5-6-2016  
Revised: 4-25-2025

## CONTENTS

Auxiliary Codes.....	3
Note About Ordering Parts .....	3
A. Main Assembly & Refrigeration Circuit .....	4
B. Icemaking Unit .....	8
C. Water Circuit.....	10
D. Control Box Assembly.....	12
D. Control Box Assembly.....	13
E. Accessories & Labels .....	15

## Auxiliary Codes

### F-450MAJ

F-0	April 2016
F-1	November 2016
G-0	January 2017
G-1	June 2017
G-2	July 2017
H-0	January 2018
J-0	January 2019
J-1	April 2019
J-2	July 2019
K-0	January 2020
L-0	January 2021
M-0	January 2022
M-1	May 2022
M-2	September 2022
N-0	January 2023
N-2	August 2023
N-3	October 2023
P-0	January 2024
P-1	July 2024
Q-0	January 2025

### F-450MAJ-C

F-0	April 2016
F-1	November 2016
G-0	January 2017
G-1	June 2017
G-2	July 2017
H-0	January 2018
J-0	January 2019
J-1	April 2019
J-2	July 2019
K-0	January 2020
L-0	January 2021
M-0	January 2022
M-1	May 2022
M-2	September 2022
N-0	January 2023
N-2	August 2023
N-3	November 2023
P-0	January 2024
P-1	July 2024
Q-0	January 2025

## Auxiliary Code Breakdown

The auxiliary code is the first two characters in the serial number. The first character indicates the year. Years progress or regress in alphabetical order. The series runs from "A" through "V" and the letters "I" and "O" are skipped. The second character indicates significant part changes within a year. Base is "0" and this number advances for each change. In cases where there is a letter in parentheses, this designates the month. This is the last character in the serial number. The series runs from "(A)" through "(M)" and the letter "(I)" is skipped. This designation is only included when identifying a parts change within an auxiliary code.

## Note About Ordering Parts

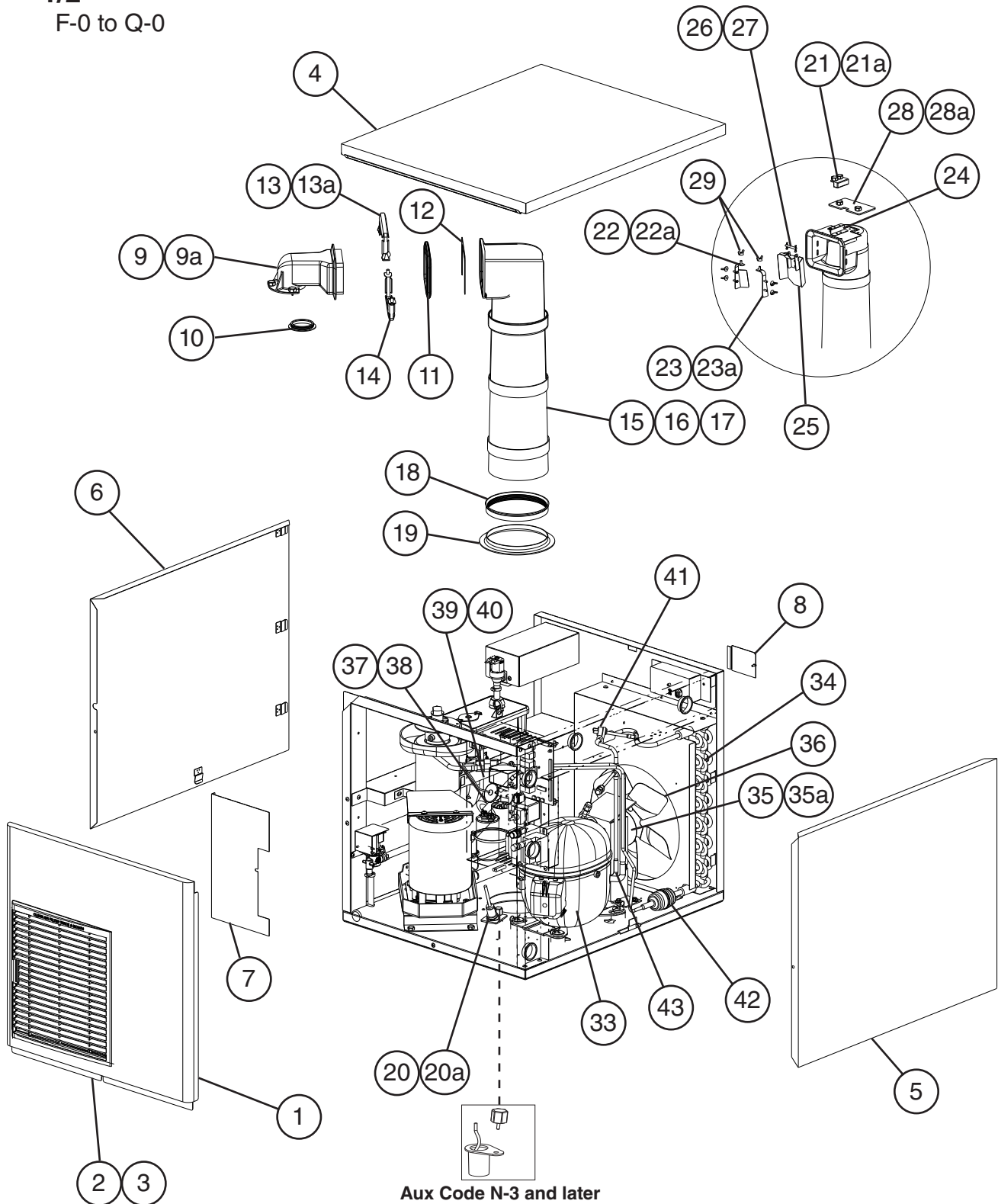
Most assemblies cannot be ordered as complete units; parts in the assemblies generally must be ordered separately.

# A. Main Assembly & Refrigeration Circuit

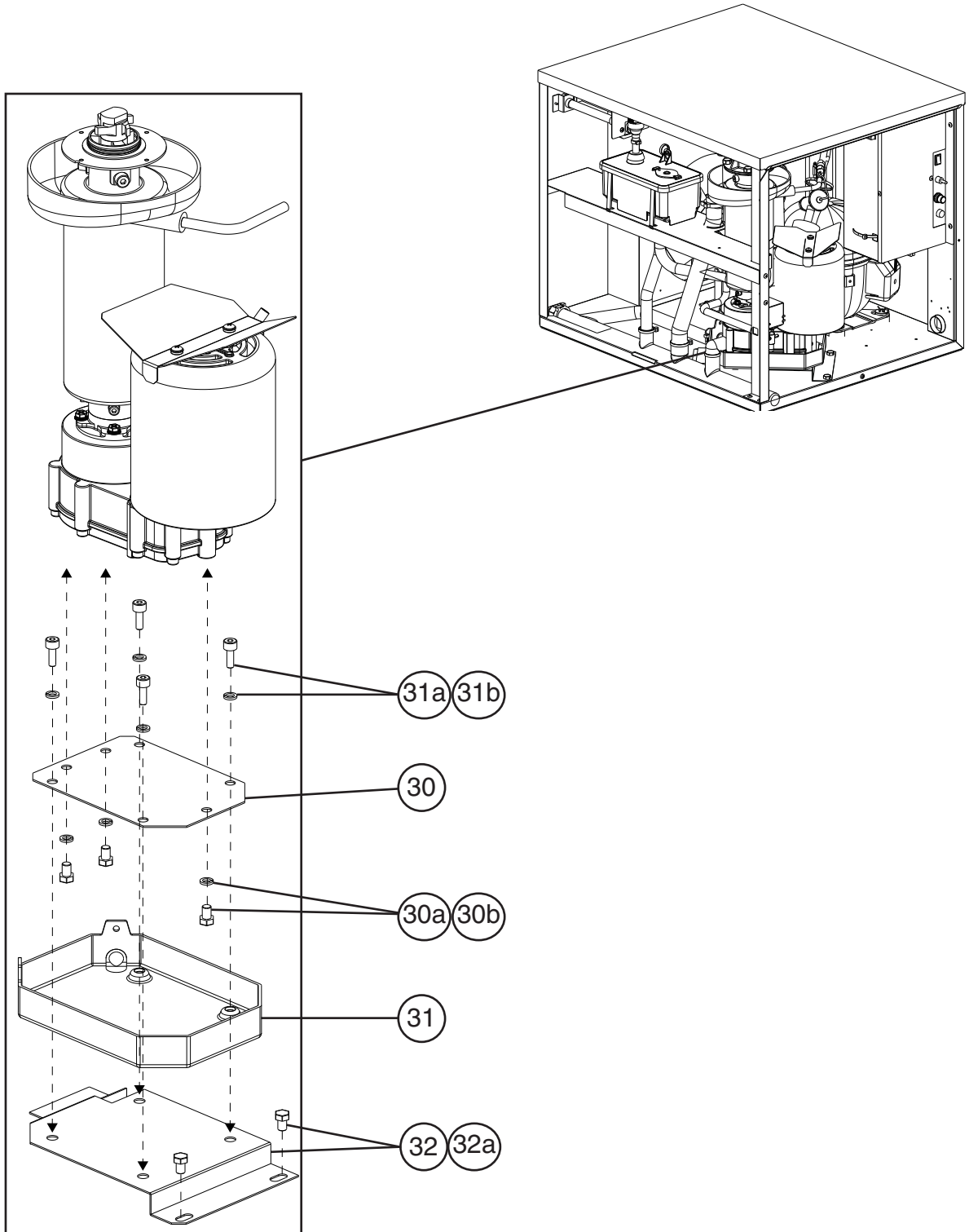
## F-450MAJ(-C)

1/2

F-0 to Q-0



**A. Main Assembly & Refrigeration Circuit**  
**F-450MAJ(-C)**  
**2/2**  
F-0 to Q-0

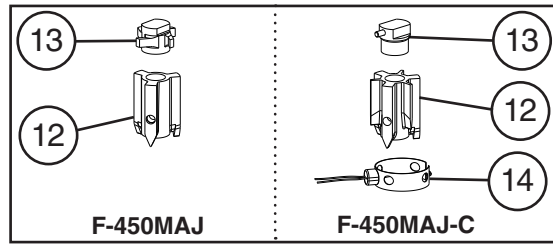


**Title: A. Main Assembly & Refrigeration Circuit Model: F-450MAJ(-C)**

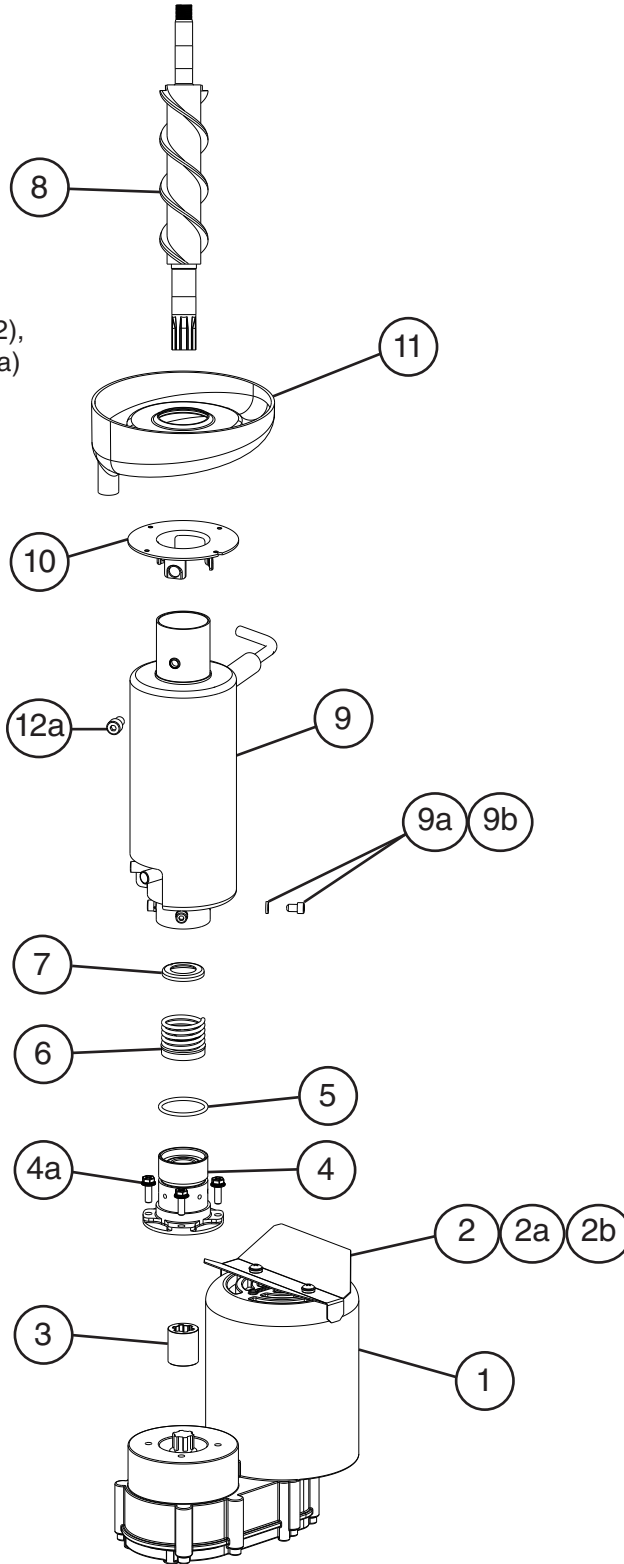
Index No.	Description	Material or Model Number	Part Number	Required Number										
				F-0 to H-0	J-1 to M-0	M-1 to N-0	N-2 to N-3 (K)	N-3 (L) to Q-0						
1	Front Panel Assembly (includes items 2 and 3)		1A6906A01	1	1	1	1	1						
2	Louver		1A0547-01	1	1	1	1	1						
3	Air Filter		2A2062G01	1	1	1	1	1						
4	Top Panel		2A2064-02	1	1	1	1	1						
5	Right Side Panel		2A2067G01	1	1	1	1	1						
6	Left Side Panel		2A2066G01	1	1	1	1	1						
7	Control Box Cover		3A0411-01	1	1	1	1	-						
			3B1302-01					1						
8	Junction Box Cover		433410-01	1	1	1	1	1						
9	Spout		2A0915-01	1	1	1	1	1						
9a	Thumbscrew		415949G08	3	3	3	3	3						
10	Evaporator Packing		427151-01	1	1	1	1	1						
11	Spout-to-Chute Packing		321037-01	1	1	1	1	1						
12	Spout-to-Chute Bracket		4A1712-01	1	1	1	1	1						
13	Upper Spout Strap		328703-02	1	1	1	1	1						
13a	Wing Nut		7E12-0600	2	2	2	2	2						
14	Lower Strap		321038G02	1	1	1	1	1						
15	Chute		2A1308-02	1	-									
			2A1308-01		1	1	1	1						
16	Chute Insulation		2A0989-01	1	1	1	1	1						
17	Chute Packing		432877-01	1	1	1	1	1						
18	Ring		3A1017-01	1	1	1	1	1						
19	Bin Control - Infrared Sensor		4A4469-01	1	1	1	1	-						
	Bin Control - Ultrasonic Sensor		4A6148G02					1						
20	Infrared Sensor Housing		3A3478-02	1	1	1	1	-						
	Ultrasonic Sensor Housing		1A6270-01					1						
20a	Thumbscrew		415949G08	1	1	1	1	-						
			415949G10					1						
21	Bin Control 2 Proximity Switch (mechanical bin control)		4A2033-01		1	1	1	1						
21a	Thumbscrew		415949G10		2	2	2	2						
22	Chute Baffle A		3A0400G01		1	1	1	1						
22a	Wing Nut		7E12-0400		3	3	3	3						
23	Chute Baffle B		3A0399G01		1	1	1	1						
23a	Wing Nut		7E12-0400		3	3	3	3						
24	Bin Control 2 Bracket (mechanical bin control)		3A1744G01		1	1	1	1						
25	Actuator		436848G01		1	1	1	1						
26	Shaft		436851-01		1	1	1	1						
27	Snap Pin		715S-0005		1	1	1	1						
28	Plate		4A2039-01		1	1	1	1						
28a	Thumbscrew		415949G10		2	2	2	2						
29	Truss Head Screw (ground)		7C32-0408		1	1	1	1						
30	Gear Motor Mounting Bracket		4A4308-01		1	1	1	1						
30a	Hex Bolt	8x12, SS	7B02-0812		3	3	3	3						
30b	Split Lock Washer	M8, SS	7L22-0800	3	3	3	3	3						

Title: A. Main Assembly & Refrigeration Circuit Model: F-450MAJ(-C)												
Index No.	Description	Material or Model Number	Part Number	Required Number								
				F-0 to H-0	J-1 to M-0	M-1 to N-0	N-2 to N-3 (K)	N-3 (L) to Q-0				
31	Drain Pan Assembly		4A4354G01	1	1	1	1	1				
31a	Socket Head Cap Screw	8x20, SS	7S12-0820	4	4	4	4	4				
31b	Split Lock Washer	M8, SS	7L22-0800	4	4	4	4	4				
32	Drain Pan Mounting Bracket		4A4314G01	1	1	1	1	1				
32a	Hex Bolt		7B02-0812	2	2	2	2	2				
<b>Refrigeration Circuit</b>												
33	Compressor		4A5090-01	1	1	1	1	1				
34	Condenser		2A3476-01	1	1	1	1	1				
35	Fan Motor		4A3158-01	1	1	1	1	1				
35a	Self-Locking Nut		7N2110832	4	4	4	4	4				
36	Fan Blade		444898-01	1	1	1	1	1				
37	Thermostatic Expansion Valve		4A4493-01	1	1	1	1	1				
38	Thermostatic Expansion Valve Cover		4A1168-01	1	1	1	1	1				
39	Thermostatic Expansion Valve Bulb Holder		3A0112-01	1	1	1	1	1				
40	Clamp		443461-01	1	1	1	1	1				
41	High-Pressure Switch		463180-04	1	1	-						
			4A7070-04			1	1	1				
42	Drier		4A2666-01	1	1	1	1	1				
43	Heat Exchanger		3A8938G01	1	1	-		1				

**B. Icemaking Unit**  
**F-450MAJ(-C)**  
 F-0 to Q-0



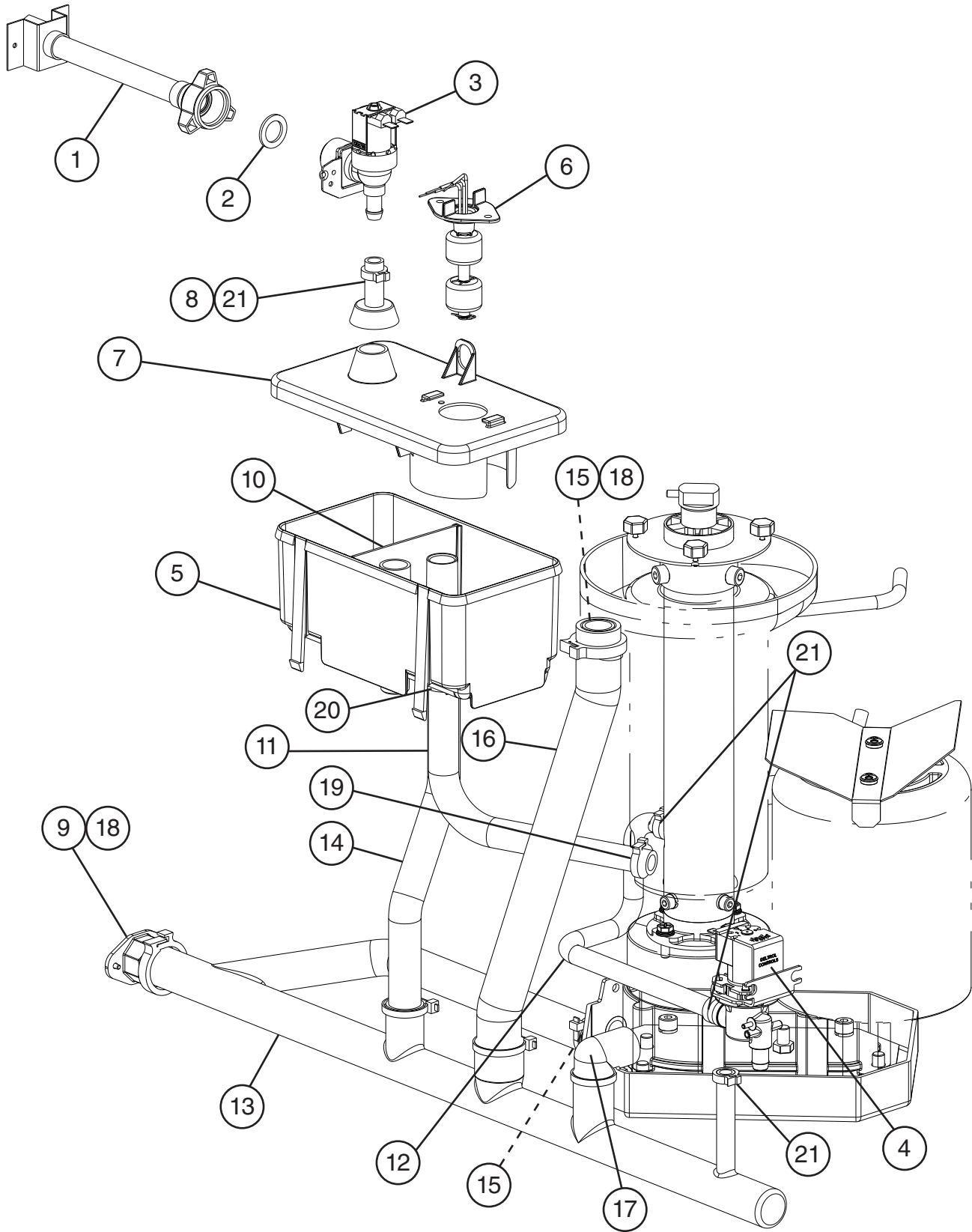
Note: When ordering auger, auxillary code G-1 and earlier must also order housing (item 4), extruding head (item 12), and seal bolts (item 12a) and replace as a set.





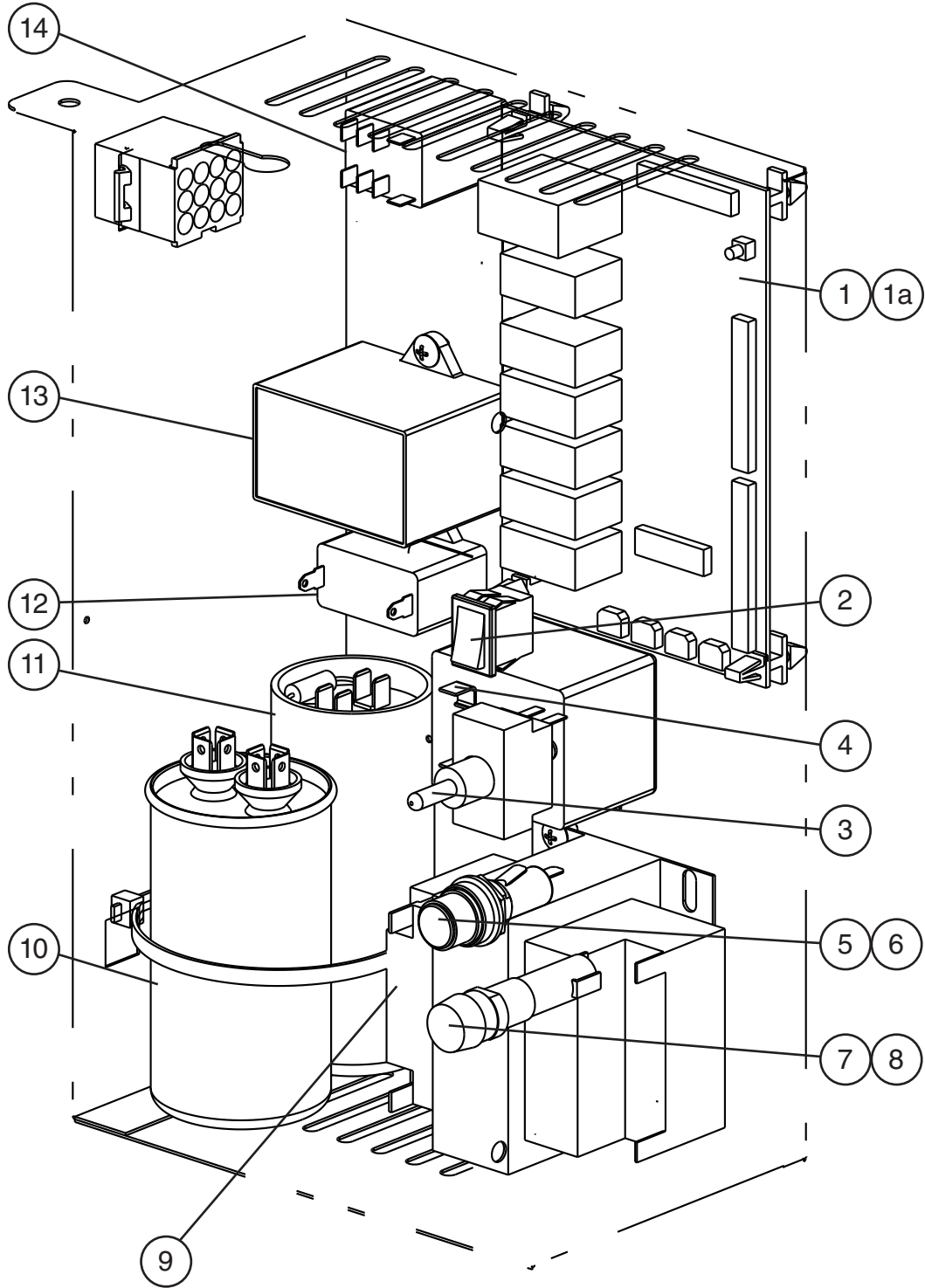
Title: B. Icemaking Unit Model: F-450MAJ(-C)													
Index No.	Description	Material or Model Number	Part Number	Required Number									
				F-0 to G2 (L)	G2 (M) to H-0	H-0 (D) to J-1	J-2 (J) to M-1 (D)	M-1 (E) to Q-0					
1	Gear Motor		4A4321-01	1	1	1	1	1					
2	Shield		3A4584-01	1	1	1	1	1					
2a	Truss Head Screw	5x8	7C32-0508	2	2	2	2	2					
2b	Rubber Seal Washer		4A5268-02	2	2	2	2	2					
3	Spline Coupling		418316-01	1	1	1	1	1					
4	Housing		383613G01	1	1	1	1	1					
4a	Bolt (includes flat/lock washer)	6x20	4A1989-01	4	4	4	4	4					
5	O-Ring		4A4755-01	1	1	1	1	1					
6	Mechanical Seal		432491-03	1	1	1	1	1					
7	Ring B		432494-01	1	1	1	1	1					
8	Auger Note: When ordering auger, auxillary code G-1 and earlier must also order housing (item 4), extruding head (item 12), a seal bolts (item 12a) and replace as a set.		269912G01 See "Note" under "Description"	1	1	1	-						
			1A5568G01				1	-					
			269909G01					1					
9	Evaporator		2A7797G01	1	1	1	1	-					
			2A7797G02					1					
9a	Socket Head Cap Screw	6x10, SS	4A7498-01	4	4	4	4	4					
9b	Split Lock Washer		7L22-0600	4	4	4	4	4					
10	Flange		464843-02	1	1	1	1	1					
11	Drip Pan		2A4118-01	1	1	1	1	1					
12	Extruding Head	<b>F-450MAJ</b>	340077G01	1	1	-							
			340077G02			1	1	1					
		<b>F-450MAJ-C</b>	327141G01	1	-								
			327141G03		1	1	1	1					
12a	Seal Bolt		P01768-02	3	3	3	3	3					
13	Cutter	<b>F-450MAJ</b>	453790-01	1	1	1	1	1					
		<b>F-450MAJ-C</b>	439228G01	1	1	1	1	1					
14	Evaporator Heater	<b>F-450MAJ-C</b>	4A4375-01	1	1	1	1	1					

**C. Water Circuit**  
**F-450MAJ(-C)**  
F-0 to Q-0

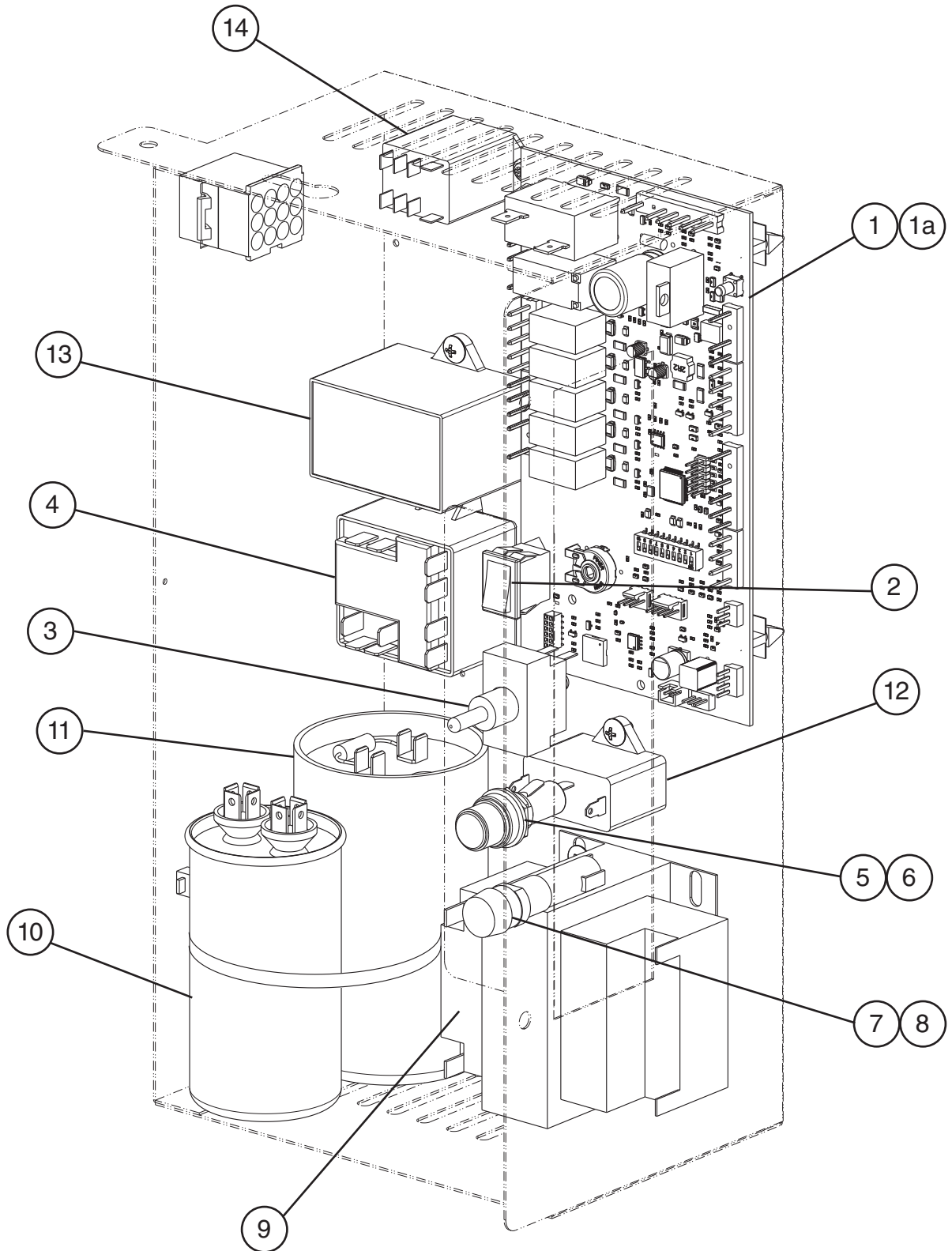


Title: C. Water Circuit Model: F-450MAJ(-C)											
Index No.	Description	Material or Model Number	Part Number	Required Number							
				F-0 to L-0 (H)	L-0 (J) to N-0 (C)	N-0 (D) to Q-0					
1	Water Supply Pipe		4A0891G04	1	1	1					
2	Rubber Gasket		413854-03	1	1	1					
3	Inlet Water Valve		4A5309-01	1	1	1					
4	Drain Valve		4A2772-02	1	1	1					
5	Reservoir		2A0753-01	1	1	1					
6	Float Switch Assembly		435490-01	1	1	-					
			3B1240G01			1					
7	Reservoir Cover		214810-01	1	1	1					
8	Reservoir Inlet		4A0869-01	1	1	1					
9	Drain Fitting		4A5528-01	1	1	1					
10	Reservoir Separator		4A1255-01	1	1	1					
11	Reservoir Hose		4A1165-05	1	1	1					
12	Silicone Hose	L=332 mm	773013896	1	1	1					
13	Drain Hose		3A8170-01	1	1	1					
14	Vinyl Hose	L=289 mm	7725-1923	1	-						
			7725B1923		1	1					
15	Vinyl Hose	L=30 mm	7725-1923	2	-						
			7725B1923		2	2					
16	Vinyl Hose	L=345 mm	4A0658L01	1	1	1					
17	Elbow		4A5624-01	1	1	1					
<b>Clamps</b>											
18	Hose Clamp	32-37 mm	4A2017-03	2	2	2					
19	Hose Clamp	17-21 mm	4A2017-05	1	1	1					
20	Hose Clamp	19-22 mm	4A2017-06	1	1	1					
21	Hose Clamp	13.5-15 mm	4A2017-08	4	4	4					

**D. Control Box Assembly**  
**F-450MAJ(-C)**  
**1/2**  
F-0 to G-2



**D. Control Box Assembly**  
**F-450MAJ(-C)**  
**2/2**  
G-2(M) to Q-0

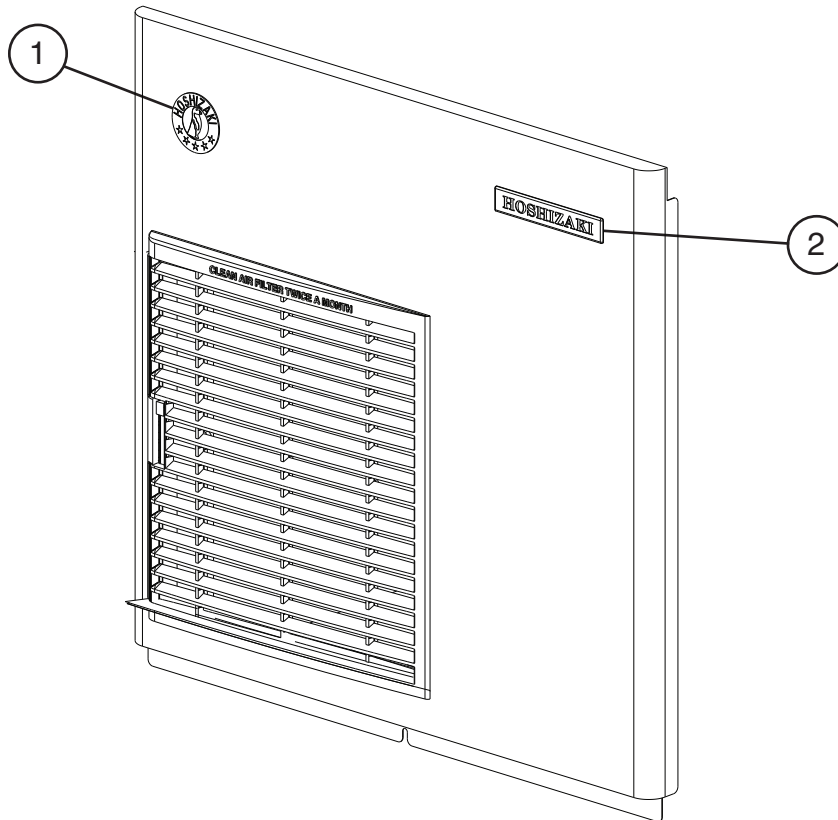


Title: D. Control Box Assembly Model: F-450MAJ(-C)										
Index No.	Description	Material or Model Number	Part Number	Required Number						
				F-0	F-1 (L) to G-2	G-2 (M) to J-2 (E)	J-2 (G) to N-0	N-2 (H) to Q-0 (D)		
1	Control Board		2A9093-01	1	1	1	1	-		
			2A9874-01					1		
1a	Control Board Support		4A0336-03	4	4	4	4	4		
2	Control Switch (rocker)		4A0558-01	1	1	1	1	1		
3	Power Switch (toggle)		4A2332-01	1	1	1	1	1		
4	Start Relay		4A1107-18	1	1	1	1	1		
5	Fuse Holder		4A5443-01	1	1	1	1	1		
6	Fuse	AGC-3A, 250VAC	4A0893-03	1	1	1	1	1		
7	Fuse Holder		4A3449-02	1	1	-				
			4A6101-01			1	1	1		
8	Fuse	GMD-2.0A, 250VAC	4A0893-05	1	1	1	1	1		
9	Control Transformer		4A0507-01	1	1	1	1	1		
10	Run Capacitor	35MFD, 440VAC	3A2005-12	1	1	1	1	1		
11	Start Capacitor	243-292MFD, 165VAC	3A0076-20	1	1	1	1	1		
12	Fan Motor Capacitor	5MFD, 250VAC	443192-02	1	1	-				
			4A6435-02			1	1	1		
13	Gear Motor Capacitor	20MFD, 350VAC	4A4319-01	1	1	1	1	1		
14	Compressor Control Relay	120VAC	406132-07	1	1	1	-			
			4A6558-01				1	1		

## E. Accessories & Labels

### F-450MAJ(-C)

F-0 to Q-0



Title: E. Accessories & Labels		Model: F-450MAJ(-C)		Required Number							
Index No.	Description	Material or Model Number	Part Number	F-0 to G-2	G-2 (L) to Q-0						
				1	Penguin-Ha Label		475552L02	1	1		
2	Hoshizaki Emblem		4A0560-01	1	1						
3	Universal Brace		4A0363-01	2	2						
3a	Hex Head Bolt	5x12, SS	7B02-0512	2	2						