

Hoshizaki America, Inc.

Self-Contained Flaker

Model
F-500BAF



“A Superior Degree
of Reliability”

www.hoshizaki.com

PARTS LIST



Number: 71127
Issued: 3-15-1999
Revised: 10-25-2011

CONTENTS

Auxiliary Codes.....	3
Note About Ordering Parts	3
Material Abbreviations	4
A. Ice Flaker Assembly	5
B. Ice Making Unit	9
C. Refrigeration Circuit.....	11
D. Water Circuit	13
E. Control Box Assembly.....	15
F. Bin Top Cover Assembly.....	17
G. Sliding Door	18
H. Label Location.....	19
J. Spout Assembly	21
K. Accessories & Packaging	22

Auxiliary Codes

F-500BAF

H-0	Septmeber 1998
J-0	December 1998
J-1	August 1999
K-0	January 2000
K-1	April 2000
L-0	March 2001
M-0	January 2002
M-1	October 2002
N-0	December 2002
P-0	December 2003
P-1	June 2004
Q-0	December 2004
Q-1	October 2005
R-0	December 2005
S-0	January 2007
S-1	November2007
T-0	January 2008
U-0	January2009
V-0	January 2010
V-2	May 2010
V-3	August2010
A-0	January 2011

Auxiliary Code Breakdown

The auxiliary code is the first two characters in the serial number. The first character indicates the year. Years progress or regress in alphabetical order. The series runs from "A" through "V" and the letters "I" and "O" are skipped. The second character indicates significant part changes within a year. Base is "0" and this number advances for each change. In cases where there is a letter in parentheses, this designates the month. This is the last character in the serial number. The series runs from "(A)" through "(M)" and the letter "(I)" is skipped. This designation is only included when identifying a parts change within an auxiliary code.

Note About Ordering Parts

Most assemblies cannot be ordered as complete units; parts in the assemblies generally must be ordered separately.

Material Abbreviations

ALUMINUM

AL = Aluminum

COPPER

CU = Copper

PLASTIC

ABS = Acrylonitrile -butadiene -styrene
AC = Polyacetal
EVA = Ethylene vinyl acetate
PA = Polyamide = Nylon
PC = Polycarbonate
PE = Polyethylene
PES = Polyester
PETP = Polyethylene terephthalate = Tetlon
PP = Polypropylene
PS = Polystyrene
PTFE = Polytetrafluoroethylene = Teflon
PUR = Polyurethane
PVC = Polyvinyl chloride

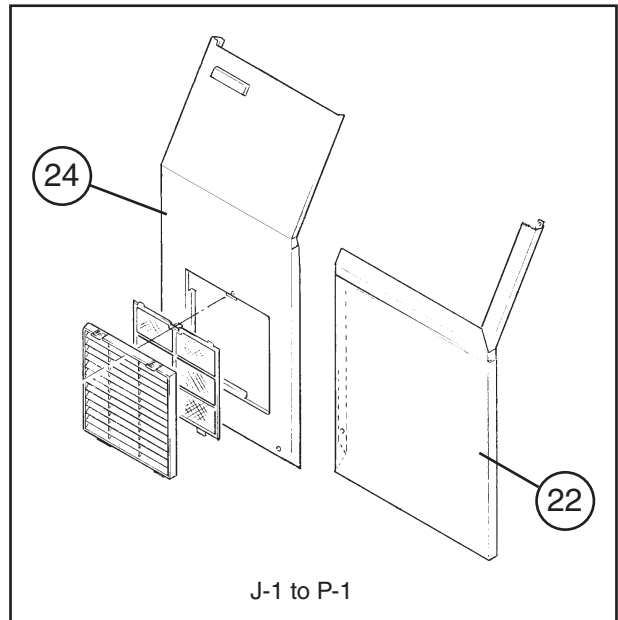
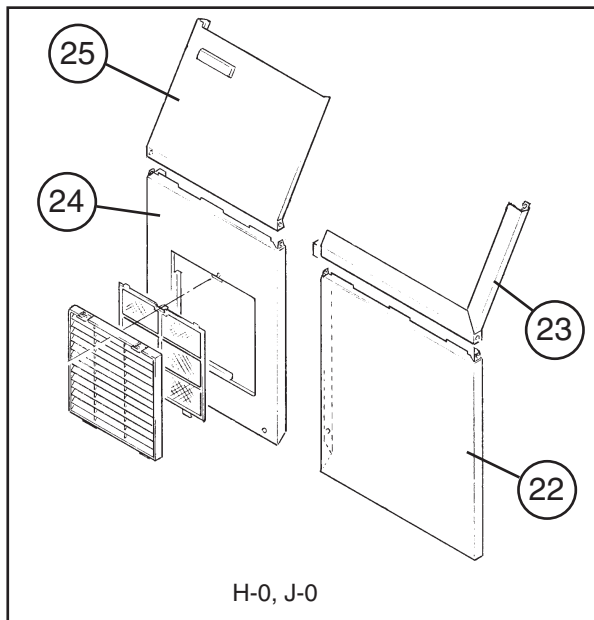
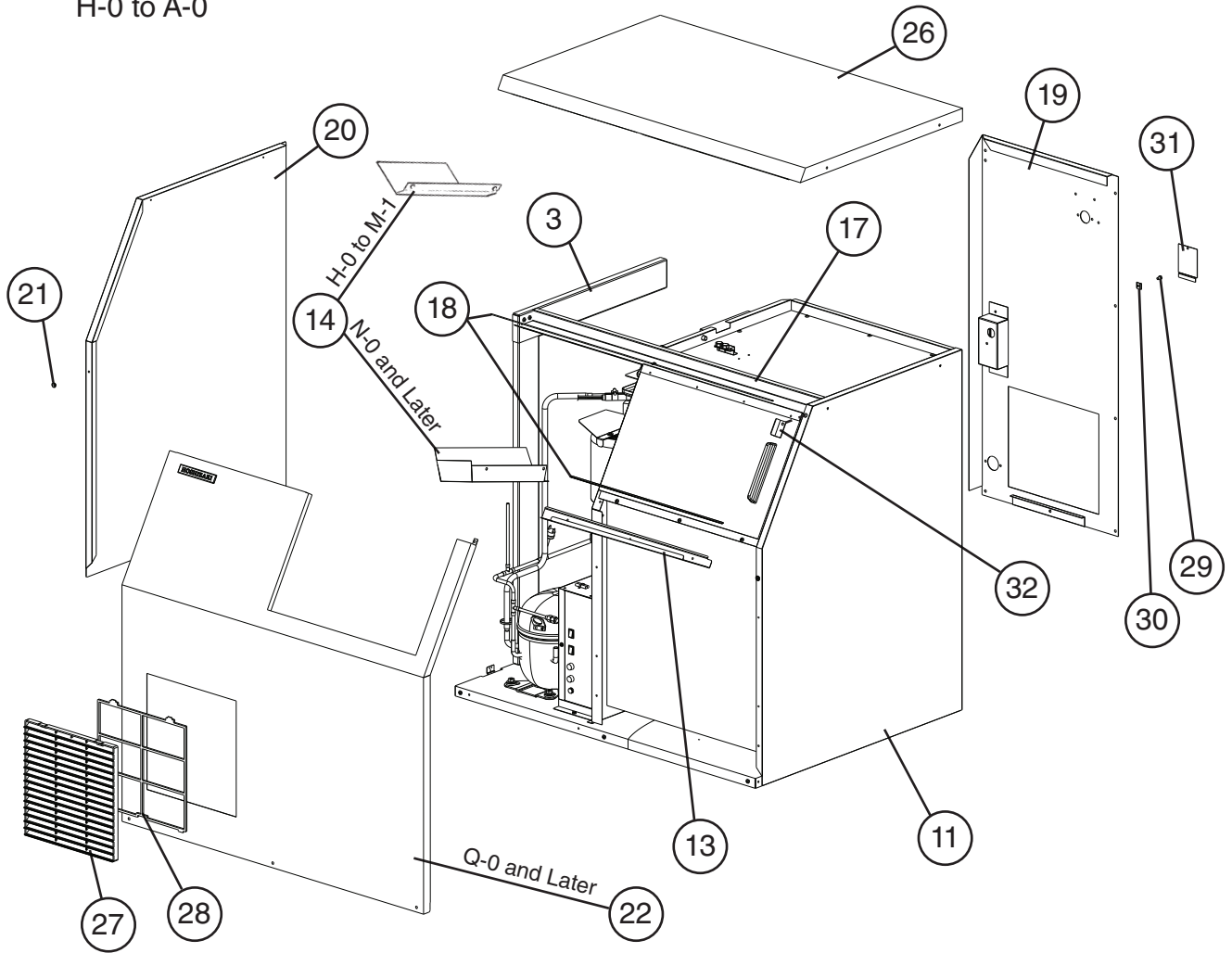
RUBBER

VN = Vinyl Nitrile
EPDM = EP rubber
NBR = Nitrile butadiene rubber
NR = Natural rubber
NP = Neoprene
SI.R = Silicone rubber
SY.R = Synthetic rubber
EPH = Epichlorohydrin

STEEL

GS = Galvanized steel
SS = Stainless steel
PS = Plated steel
PAS = Primed steel

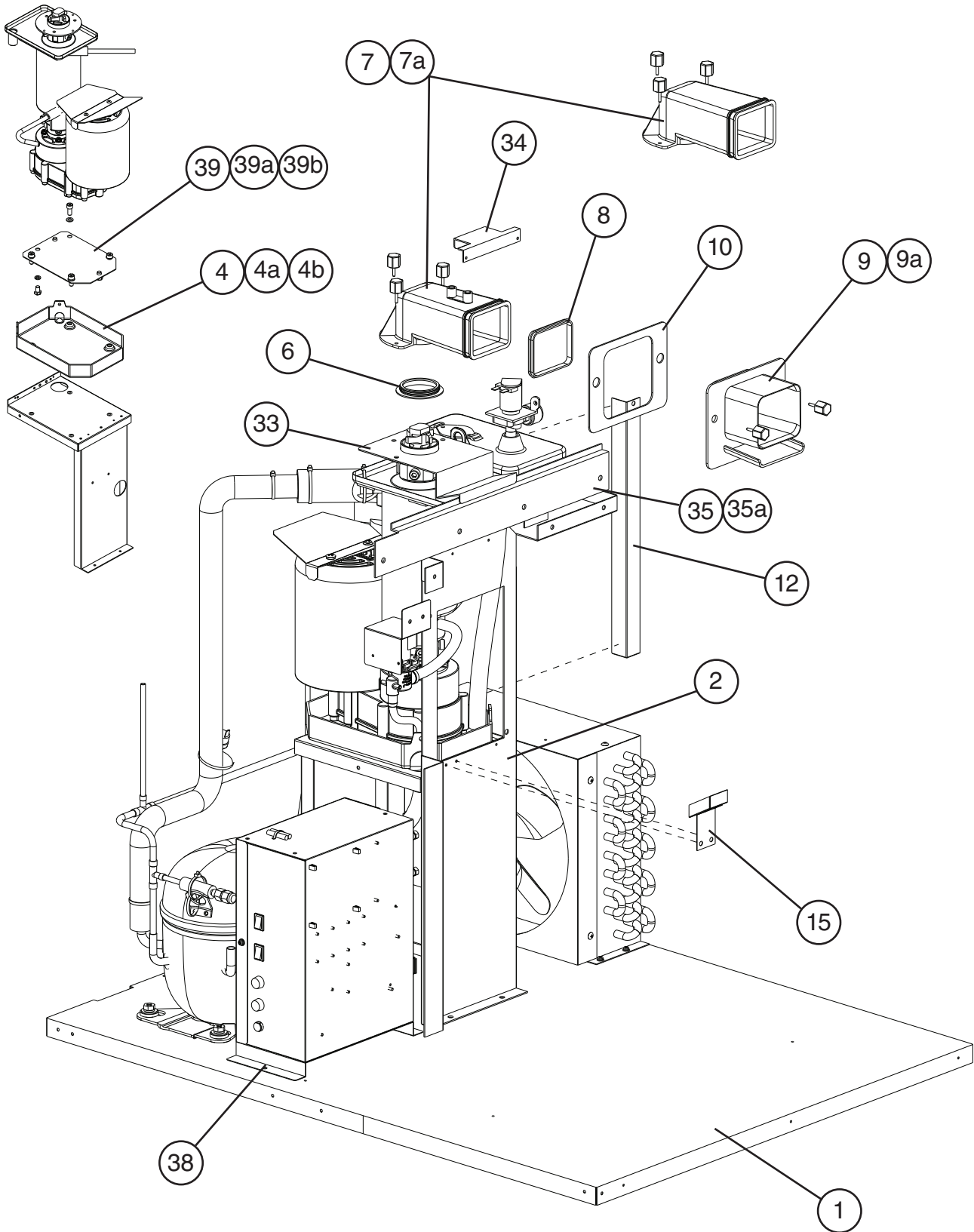
A. Ice Flaker Assembly
F-500BAF 1/2
 H-0 to A-0



A. Ice Flaker Assembly

F-500BAF 2/2

H-0 to A-0



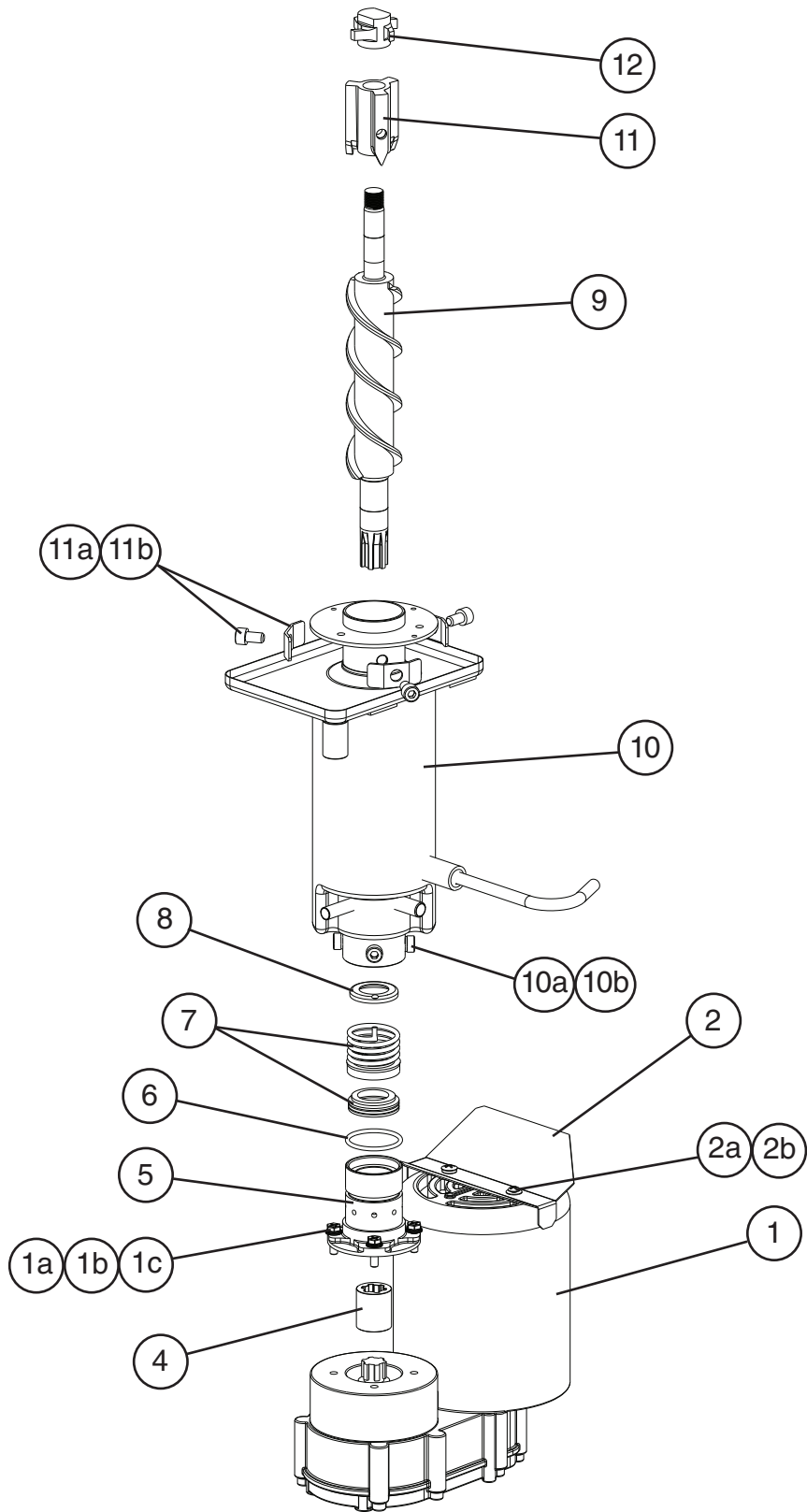
Title: **A. Ice Flaker Assembly** Model: **F-500BAF**

Index No.	Description	Material Or Model Number	Part Number	Required Number									
				H-0 J-0	J-1 K-0	K-1 to M-0	M-1	N-0 P-1	Q-0 to S-0	S-1 to V-0 (C)	V-0 (D)	V-2 to A-0	
	Ice Flaker Assembly Order Assembly Parts Individually		1A0709A03	1	1	1	1	1	-				
			1A0709A05						1	-			
			1A0709A07								1	-	
			1A0709A09									1	-
			1A2026A01										1
1	Base		108681G01	1	1	1	1	1	-				
			1A1009G01						1	1	1	1	
2	Frame (C)		227127G01	1	1	-							
			2A1948G01			1	-						
			2A1948G02				1	1	1	1	-		
			2A6004G01								1	1	
3	Side Frame (L)		227141G01	1	1	1	1	1	1	1	1	1	
4	Drain Pan		323765G01	1	1	1	1	1	1	-			
			4A4354G02								1	1	1
4a	Socket Head Cap Screw		7S12-0820								4	4	4
4b	Flat Washer		7W22-0800								4	4	4
5	Strap		453662-01	1	1	1	-						
6	Packing		427151-01	1	1	1	1	1	1	1	1	1	
7	Spout		227129-01	1	1	1	See Assembly J						
7a	Thumbscrew		415949G11	3	3	3	3	3	3	3	3	3	
8	Spout Packing (A)		453663-01	1	1	1	1	1	1	1	1	1	
9	Spout (B)		227130-01	1	1	1	-						
			232654-03				1	1	1	1	1	1	
9a	Thumbscrew		415949G11	4	4	4	2	2	2	2	2	2	
10	Spout Packing (B)		453664-01	1	1	1	-						
			4A2769-01				1	1	1	1	1	1	
11	Bin-Foamed		108684G01	1	1	1	-						
			108684G02				1	1	1	1	1	1	
12	Water Tank Frame		453665-01	1	1	1	-						
			4A2994-01				1	1	1	1	1	1	
13	Deflector (A)		339853-01	1	1	1	1	1	-				
			3A3499-01							1	1	1	1
14	Deflector (B)		227137-01	1	1	1	1	-					
			4A2964G01					1	1	1	1	1	
15	Deflector (C)		453661G01	1	1	1	1	1	1	1	1	1	
16	Deflector (D)		453666-01	1	1	1	-						
17	Frame		339856-01	1	1	1	1	1	1	1	1	1	
18	Edging	L=900	425931-05	2	2	2	2	2	2	2	2	2	
19	Rear Panel		339857G01	1	1	1	1	1	1	1	1	1	
20	Side Panel (L)		227132G01	1	-								
			2A1607G01		1	1	1	1	1	1	1	1	
21	Screw Collar		4H0171-01	6	4	4	4	4	2	2	2	2	
22	Front Panel (R)-Low		227133-01	1	-								
	Front Panel (R)		2A1620G01		1	1	1	1	-				
	Front Panel		1A1056-01						1	1	1	1	

Title: **A. Ice Flaker Assembly** Model: **F-500BAF**

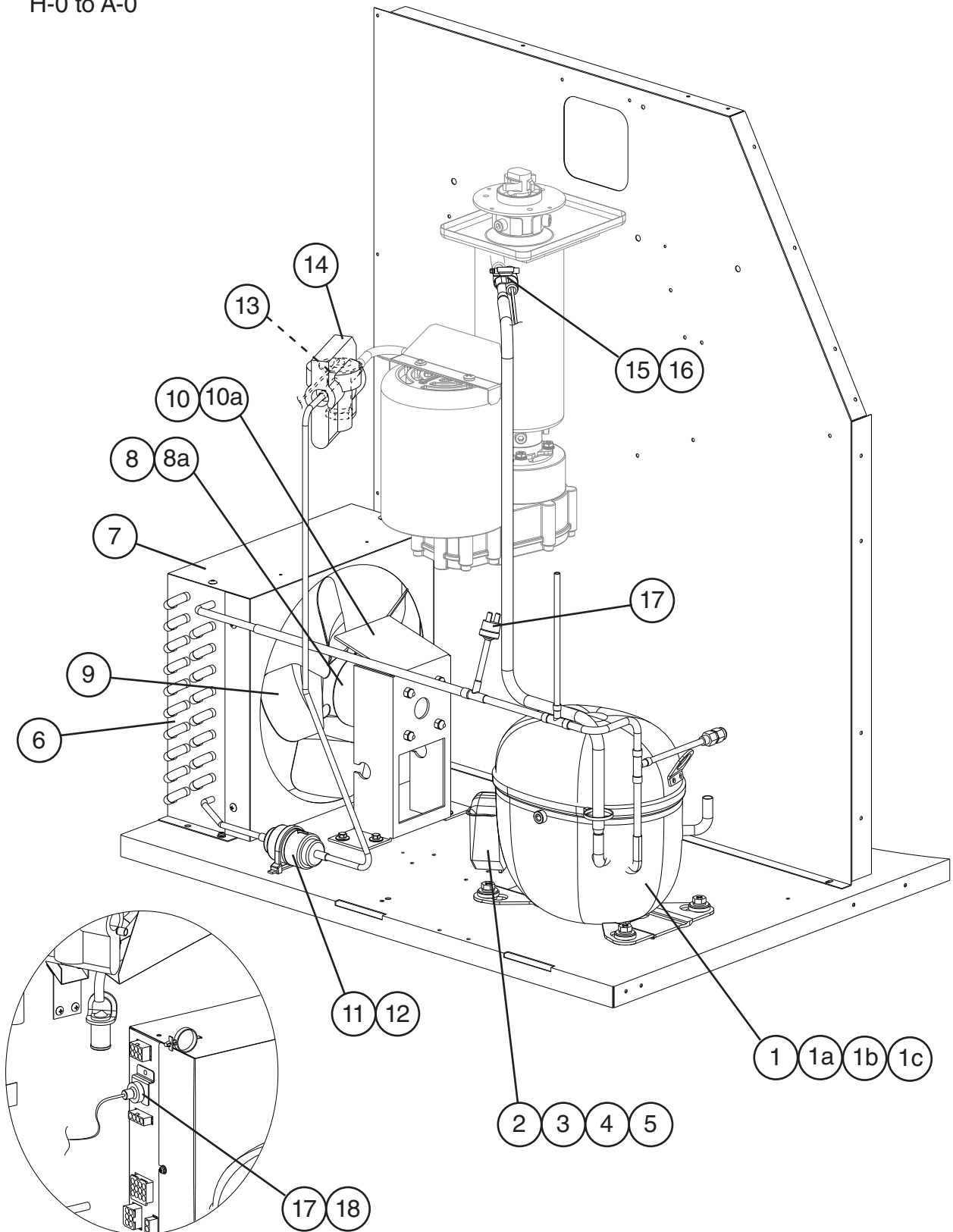
Index No.	Description	Material Or Model Number	Part Number	Required Number								
				H-0 J-0	J-1 K-0	K-1 to M-0	M-1	N-0 P-1	Q-0 to S-0	S-1 to V-0 (C)	V-0 (D)	V-2 to A-0
23	Front Panel (R)-Up		227134G01	1	-							
24	Front Panel (L)-Low		227135-01	1	-							
	Front Panel (L)		1A0472G01		1	1	1	1	-			
25	Front Panel (L)-Up		339933G01	1	-							
26	Top Panel		339872G01	1	1	1	1	1	-			
			3A3495G01						1	1	1	1
27	Louver		103121-03	1	1	1	1	1	1	1	1	1
28	Air Filter		208283G03	1	1	1	1	1	1	1	1	1
29	Grounding Screw	5x8	433304-02	1	1	1	1	1	1	1	1	1
30	Washer		433537-02	1	1	1	1	1	1	1	1	1
31	Junction Box Cover		433410-01	1	1	1	1	1	1	1	1	1
32	Stopper		453670-01	1	1	1	1	1	1	1	1	1
33	Evaporator Bracket (A)		4A2754-01				1	1	1	1	1	1
34	Evaporator Bracket (B)		4A2755-01				1	1	1	1	1	1
35	Evaporator Bracket (C)		3A2310-01				1	1	1	1	1	1
35a	Hex Head Bolt w/Washer (LF)	5x10, SS	7B0230510				4	4	4	4	4	4
36	Socket Head Hex Bolt (Evaporator Assembly Fastener)	8x95, SS	7S12-0895	3	3	3	3	3	3	3	3	3
37	Spring Washer (Evaporator Assembly Fastener)		7L22-0800	3	3	3	3	3	3	3	3	3
38	Hex Head Bolt (Control Box Fastener)	4x8, SS	7B02-0408	1	1	1	1	1	1	1	1	1
39	Gear Motor Bracket		4A4308-01							1	1	1
39a	Hex Bolt	M12, SS	7B02-0812							3	3	3
39b	Split Lock Washer		7L22-0800							3	3	3
40	Drain Bracket Assembly		4A4315G01							1	-	

B. Ice Making Unit
F-500BAF
H-0 to A-0



Title: B. Ice Making Unit Model: F-500BAF												
Index No.	Description	Material or Model Number	Part Number	Required Number								
				H-0 to K-0	K-1 to P-1	Q-0 to S-0	S-1 to A-0					
Ice Making Unit Order Assembly Parts Individually			339852A01	1	1	1	-					
			339852A03				1					
1	Gear Motor		4A0897-02	1	-							
			4A2193-01		1	1	-					
			4A4321-01				1					
1a	Bolt	6x20, SS	7B02-0620	4	-							
			458660-01		4	4	-					
			4A1989-01				4					
1b	Plain Washer		7W22-0616	4	-							
1c	Spring Washer		7L22-0600	4	-							
2	Gear Motor Barrier		3A1312-01	1	1	1	-					
			3A4584-01				1					
2a	Truss Head Screw		7C32-0508				1					
2b	Rubber Washer		4A5268-02				1					
3	Evaporator Unit (includes items 4 through 12)	HS-2001	339866A03	1	1	1	1					
4	Spline Coupling		418316-01	1	1	1	1					
5	Housing		206013G03	1	1	1	1					
6	"O" Ring		7616-G040	1	1	1	1					
7	Mechanical Seal		432491-01	1	1	1	1					
8	Ring		432494-01	1	1	1	1					
9	Auger		341448G01	1	1	1	1					
10	Evaporator		340076G01	1	-							
			2A1699G01		1	-						
			2A3310G01			1	1					
10a	Socket Head Cap Screw	6x10, SS	7S12-0610	4	4	4	4					
10b	Split Lock Washer		7L22-0600	4	4	4	4					
11	Extruding Head		340077G01	1	1	1	1					
11a	Washer		453791-01	3	3	3	3					
11b	Socket Head Cap Screw	8x14, SS	429121-01	3	3	3	3					
12	Cutter		453790-01	1	1	1	1					

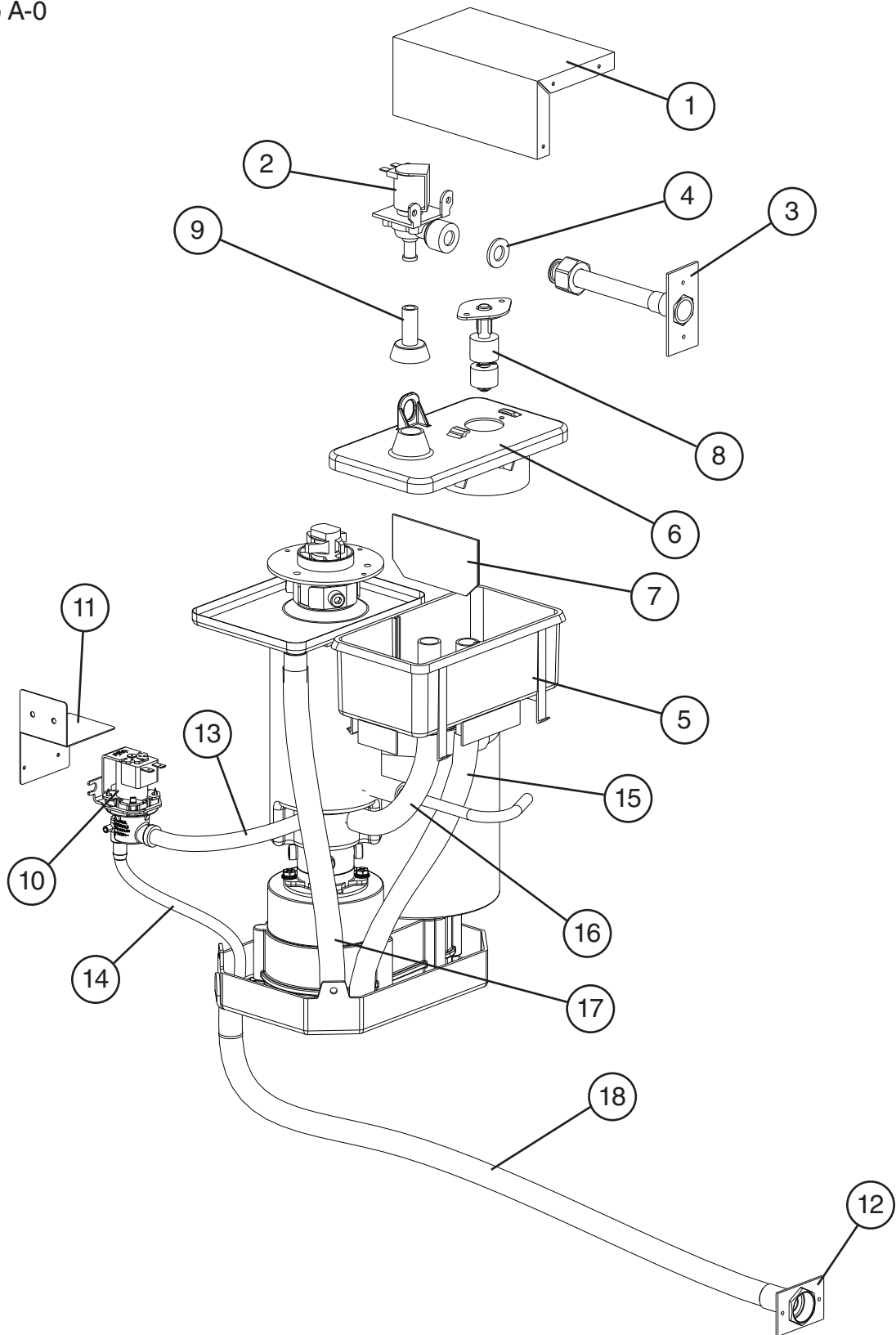
C. Refrigeration Circuit
F-500BAF
 H-0 to A-0



High Pressure Switch Detail
 H-0 to V-0

Title: C. Refrigeration Circuit Model: F-500BAF												
Index No.	Description	Material or Model Number	Part Number	Required Number								
				H-0 to P-0	P-1 to V-0	V-2 V-3	A-0					
Refrigeration Circuit Order Assembly Parts Individually			108682A01	1	1	-						
			2A5982A01			1	-					
			2A5982A02					1				
1	Compressor		4A2300-01	1	1	-						
			4A4479-01			1	1					
1a	Bolt		437889-01	4	4	4	4					
1b	Grommet		434403-01	4	4	-						
			4A2593-01			4	4					
1c	Spacer		434404-01	4	4	-						
			4A2595-01			4	4					
2	Protector		4A1805-01	1	1	-						
			4A4481-01			1	1					
3	Protector Holder		437339-01	1	1	-						
4	Terminal Cover		4A4479F01			1	1					
5	Spring Clip		4A4479F02			1	1					
6	Condenser		227142-01	1	1	1	1					
7	Shroud		339859-01	1	1	1	1					
8	Fan Motor		440911-01	1	-							
			4A3158-01		1	1	1					
8a	Self Locking Nut		7N2110832	4	4	4	4					
9	Fan Blade		444898-01	1	1	1	1					
10	Fan Motor Bracket		3A0828-01	1	1	1	1					
10a	Hex Head Bolt w/Washer (LF)	5x12, SS	7B0230512	4	4	4	4					
11	Drier		4A1113-01	1	1	1	1					
12	Drier Bracket		445847-01	1	1	-						
	Nylon Tie		8911-0301			1	1					
13	Expansion Valve		4A1117-01	1	1	1	1					
14	Expansion Valve Cover		4A1168-01	1	1	1	1					
15	Expansion Valve Bulb Holder		3A0107-01	1	1	1	1					
16	Clamp		443461-01	1	1	1	1					
17	High Pressure Switch		433441-05	1	1	-						
			463180-05			1	1					
18	High Pressure Switch Bracket		434938-01	1	1	-						

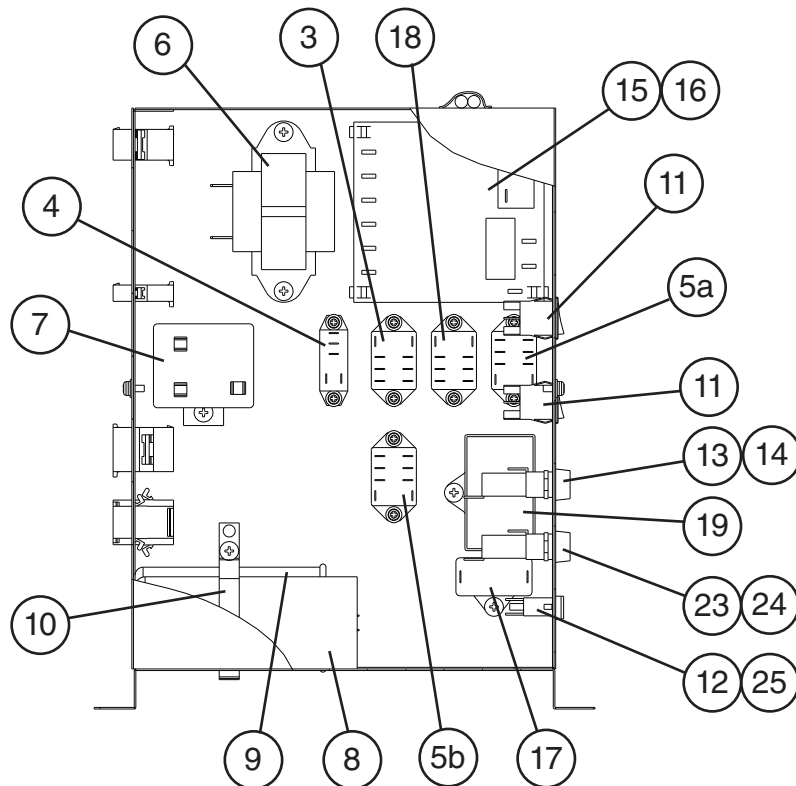
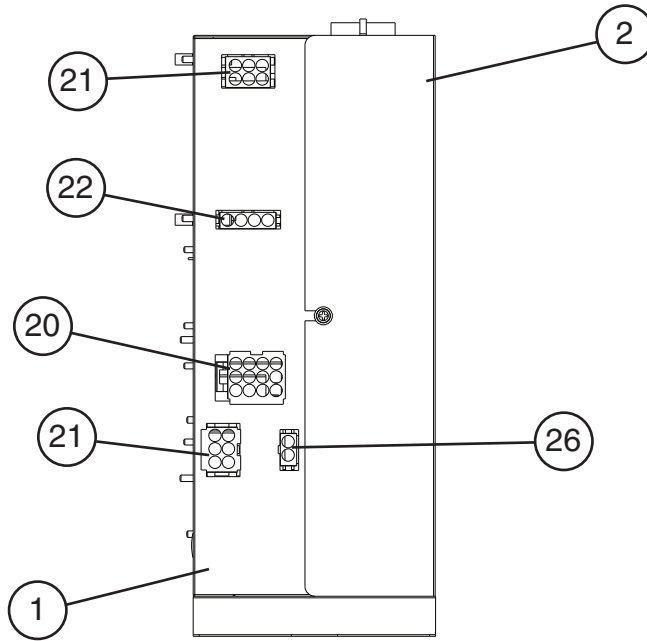
D. Water Circuit
F-8500BAF
H-0 to A-0



Title: **D. Water Circuit** Model: **F-500BAF**

Index No.	Description	Material or Model Number	Part Number	Required Number									
				H-0 J-0	J-1	K-0 K-1	L-0 to P-1	Q-0 to A-0					
Water Circuit			108683A01	1	1	1	1	1					
Order Assembly Parts Individually													
1	Water Valve Bracket		3A0553-01	1	1	1	1	1					
2	Inlet Water Valve		4A0865-01	1	1	1	1	1					
3	Water Supply Pipe		4A0891G01	1	1	1	1	1					
4	Washer		4A0867-01	1	1	1	1	1					
5	Reservoir		2A0753-01	1	1	1	1	1					
6	Reservoir Cover		214810-01	1	1	1	1	1					
7	Reservoir Separator		4A1255-01	1	1	1	1	1					
8	Float Switch		435490-01	1	1	1	1	1					
9	Reservoir Inlet		4A0869-01	1	1	1	1	1					
10	Drain Water Valve		4A0866-01	1	1	-							
			4A2077-01			1	1	-					
			4A2772-01					1					
11	Water Valve Cover		453667-01	1	1	1	1	1					
12	Drain Fitting		4A0776G01	1	1	1	1	1					
13	Silicone Hose	L=160	7730-0912	1	1	-							
		L=160	7730I3896			1	1	1					
14	Vinyl Hose	L=200	7730-0912	1	1	-							
		L=190	7716-0913			1	1	1					
15	Silicone Hose	L=290	7730-1822	1	1	1	1	1					
16	Reservoir Hose		4A1165-02	1	1	1	1	1					
17	Vinyl Hose	L=360	7725-1923	1	1	1	1	1					
18	Vinyl Hose	L=715	7725-1923	1	1	1	1	1					
	Hose Clamp		435934-06	1	-								
			4A2017-06		1	1	1	1					
	Hose Clamp		421642-04	4	-								
			4A2017-04		4	-							
			4A2017-08			4	4	4					
	Hose Clamp		435934-02	1	-								
			4A2017-05		1	1	1	1					
	Hose Clamp		4A2017-01		3	3	6	2					
	Hose Clamp		4A2017-02		1	1	1	2					

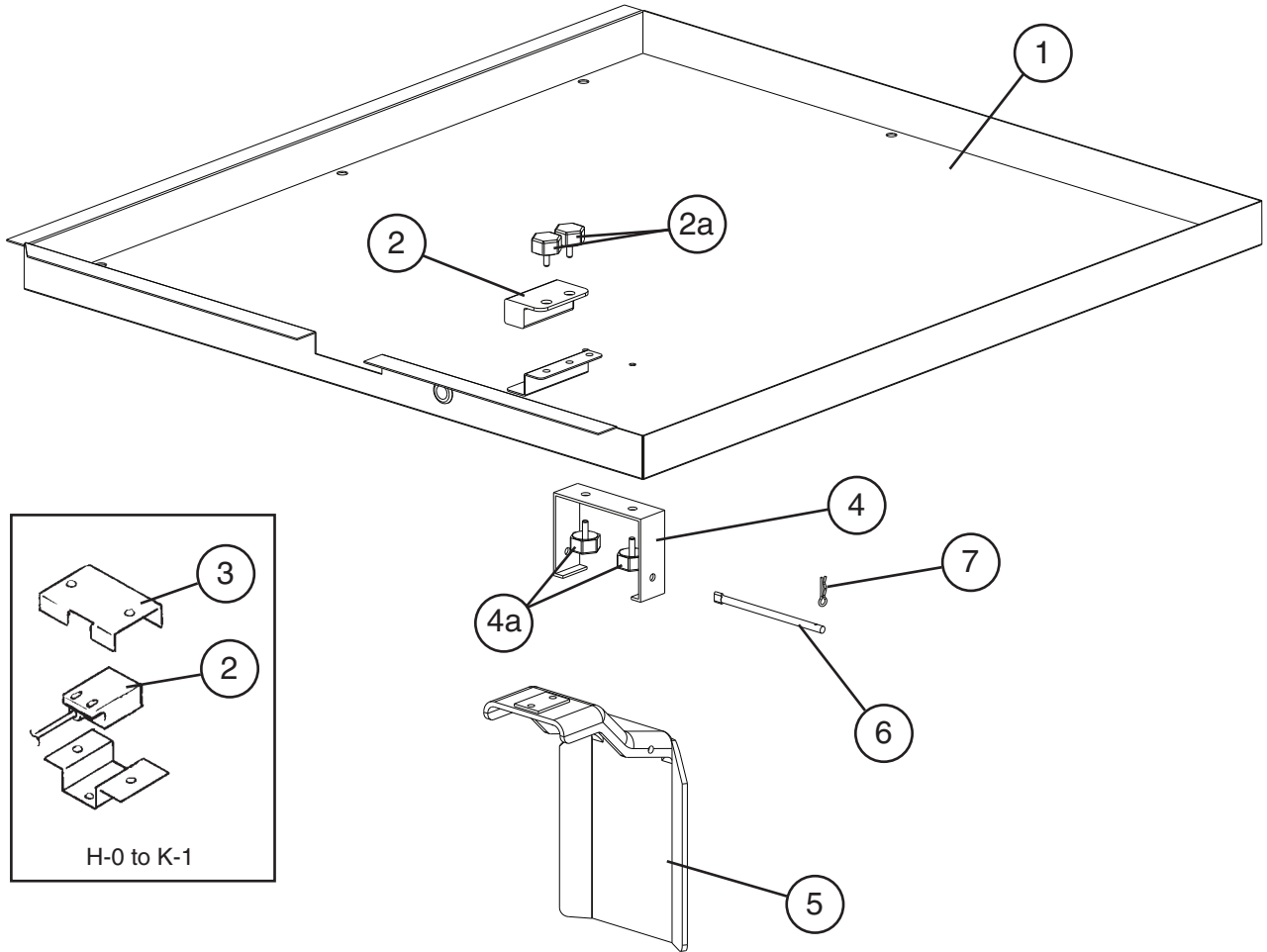
E. Control Box Assembly
F-500BAF
 H-0 to A-0



Title: E. Control Box Assembly Model: F-500BAF												
Index No.	Description	Material or Model Number	Part Number	Required Number								
				H-0 to K-0	K-1 L-0	M-0	M-1 to S-0	S-1 to V-0	V-2 to A-0			
Control Box Assembly Order Assembly Parts Individually			227131A01	1	1	1	-					
			2A2486A01				1	-				
			2A2486A02					1	-			
			3A6006A01						1			
1	Control Box		453691G01	1	-							
			4A2023G01		1	1	-					
			4A2023G02				1	1	-			
			4A5122G01						1			
2	Control Box Cover		453692-01	1	1	1	1	1	1			
3	Relay-Circuit Protect	240V	418271-05	1	1	1	1	1	1			
4	Relay-Flush Valve Control	24V	430173-03	1	1	1	1	1	1			
5	Relay-Water Control(5a) -Safety (5b)	24V	406132-06	1	1	1	2	2	2			
6	Transformer		4A0557-01	1	1	1	1	1	1			
7	Starter		4A1107-11	1	1	1	1	1	1			
8	Starting Capacitor	243-292MFD, 115VAC	3A0076-10	1	1	1	1	1	-			
		243-292MFD, 165VAC	3A0076-20						1			
9	Run Capacitor	15MFD, 370VAC	439943-04	1	1	-						
			3A2005-08			1	1	1	-			
		35MFD, 440VAC	3A2005-12						1			
10	Strap		434580-10	1	1	-						
			4A2262-02			1	1	1	1			
11	Rocker Switch		4A0558-01	2	2	2	2	2	2			
12	Protector		440972-02	1	-							
13	Fuse	1.0A	4A0893-01	1	1	1	1	1	1			
14	Fuse Holder		4A0892-01	1	1	1	1	1	-			
			4A3449-01						1			
15	Timer Board		437305-01	1	1	1	1	1	1			
16	Board Support		4A0336-03	4	4	4	4	4	4			
17	Capacitor	5MFD, 250VAC	443192-02	1	1	1	1	1	1			
18	Relay-Gear Motor Protect	120V	406132-07	1	1	1	1	1	1			
19	Capacitor	20MFD, 350VAC	4A0894-01	1	1	1	1	-				
			4A4319-01					1	1			
20	9p Plug Housing		412832-02	1	1	1	1	1	-			
	12p Plug Housing		412832-04						1			
21	6p Plug Housing		412832-03	2	2	2	2					
22	4p Plug Housing		412832-05	1	1	1	1					
23	Fuse Holder		4A0892-02		1	1	1	1	-			
			4A3449-02						1			
24	Fuse	1.5A	4A0893-04		3	3	3	-				
		2.0A	4A0893-05					3	3			
25	Lamp		4A2672-01				1	1	1			
26	2p Plug Housing		412832-07				1	1	1			

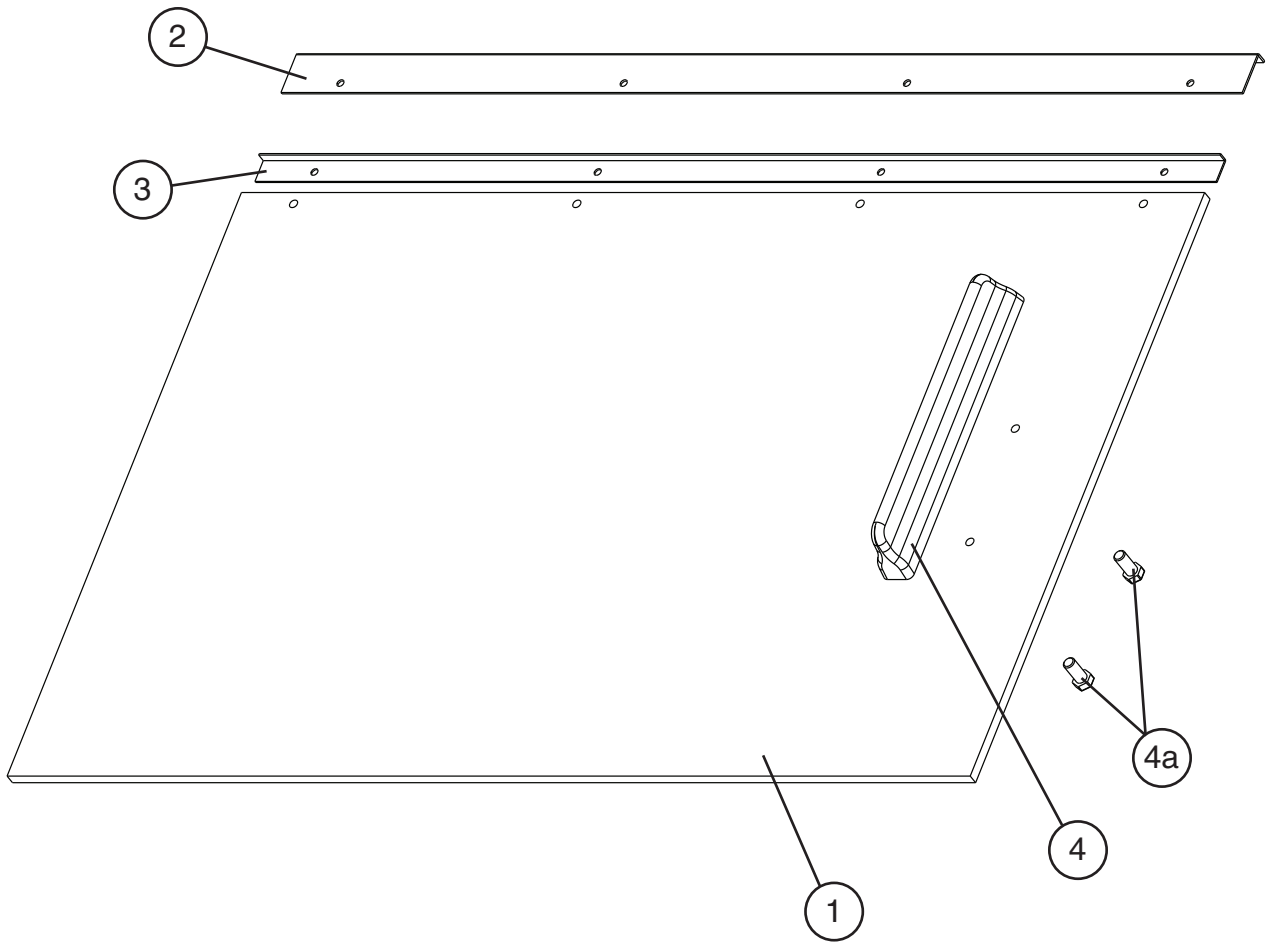
F. Bin Top Cover Assembly F-500BAF

H-0 to A-0



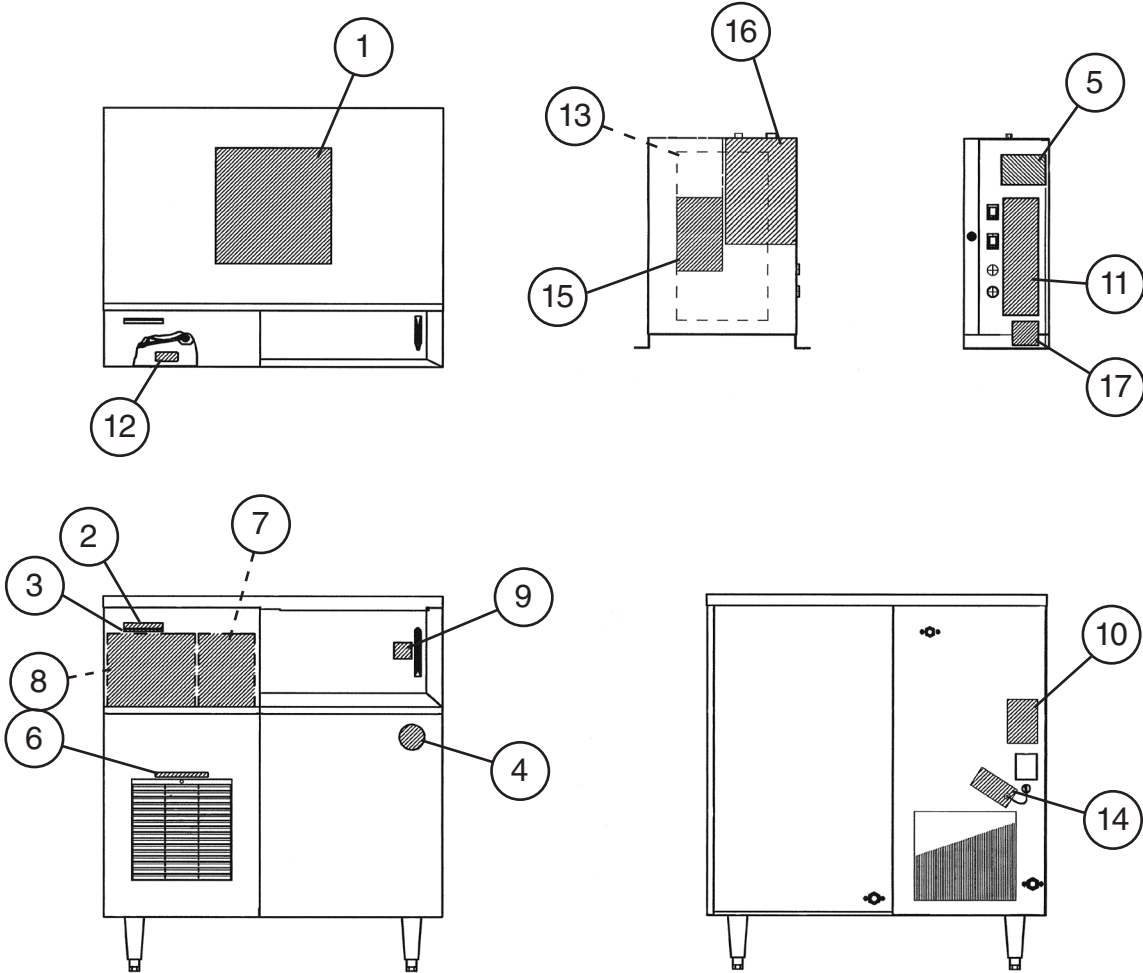
Title: F. Bin Top Cover Assembly Model: F-500BAF											
Index No.	Description	Material or Model Number	Part Number	Required Number							
				H-0 to K-0	K-1 to A-0						
Bin Top Cover Assembly			339855A01	1	-						
Order Assembly Parts Individually			3A1526A01		1						
1	Bin Top Cover		339873G01	1	-						
			3A1525G01		1						
2	Proximity Switch		427223-01	1	-						
			4A2033-01		1						
2a	Thumbscrew		415949G08	2	2						
3	Switch Bracket		427158-01	1	-						
4	Hinge		3A0762-01	1	1						
4a	Thumbscrew		415949G08	2	2						
5	Actuator		208795G01	1	1						
6	Shaft		412337-03	1	1						
7	Snap Pin		715S-0004	1	1						

G. Sliding Door
F-500BAF
 H-0 to A-0



Title: G. Sliding Door Model: F-500BAF										
Index No.	Description	Material or Model Number	Part Number	Required Number						
				H-0 to A-0						
Sliding Door			339858A01	1						
Order Assembly Parts Individually										
1	Sliding Door		453697-01	1						
2	Sliding Plate		453698-01	1						
3	Sliding Collar		453699-01	1						
4	Handle		339877G01	1						
4a	Hex Head Bolt	4x12, SS	7B02-0412	2						

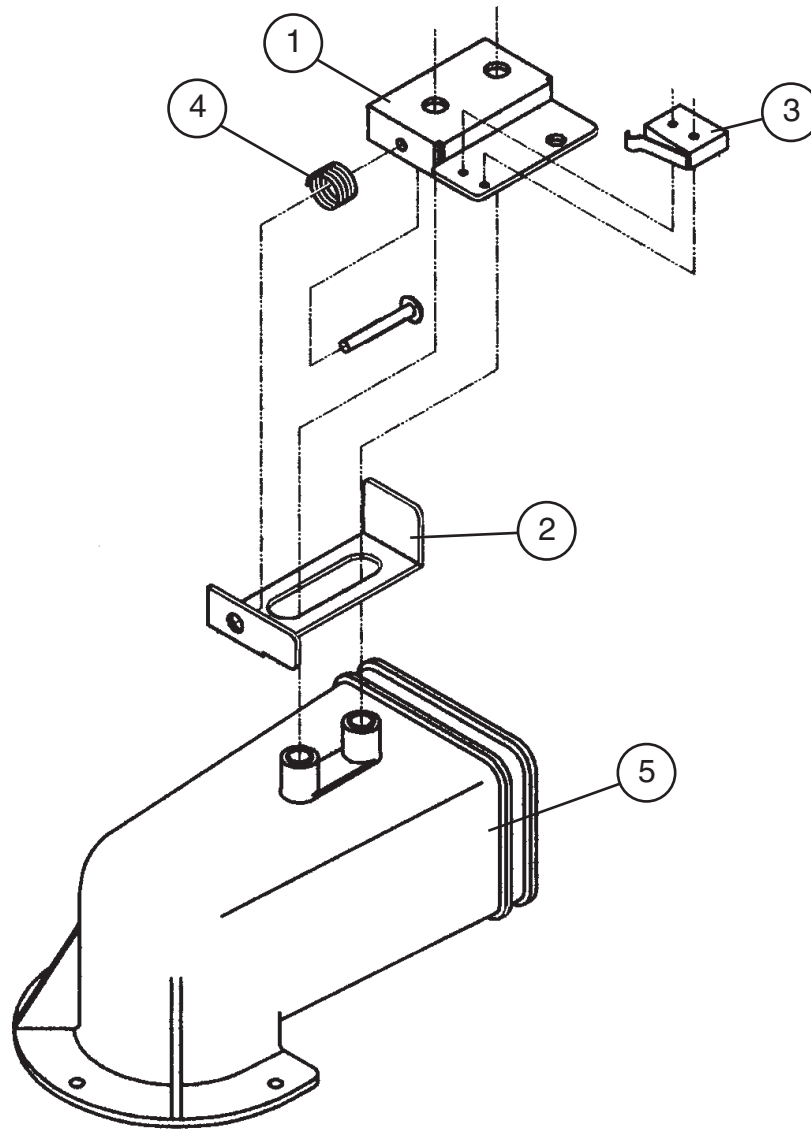
H. Label Location
F-500BAF
H-0 to A-0



Title: **H. Label Location** Model: **F-500BAF**

Index No.	Description	Material or Model Number	Part Number	Required Number										
				H-0 to K-0	K-1 to M-0	M-1	N-0 to P-1	Q-0 to S-0	S-1 to A-0					
Label Location Order Assembly Parts Individually			227138A01	1	1	-								
			227138A03			1	1	1	-					
			227138A05							1				
1	Instruction Sheet		228916-01	1	1	1	1	1	-					
2	Emblem		4A0560-01	1	1	1	1	1	1					
3	Model Number Label		4A1321-21	1	1	1	-							
4	Penguin-HA-L Label		4A0526-02	1	1	1	1	1	1					
5	Caution Label (D)		439144-01	1	1	1	1	1	1					
6	Air Filter Label		426177-01	1	1	1	1	1	1					
7	Maintenance Label		341315-01	1	1	1	1	-						
			3A3865-01						1	1				
8	Cleaning Label		214945-01	1	1	1	1	-						
			2A3442-01						1	1				
9	Sliding Door Label		427123-01	1	1	1	1	1	1					
10	Nameplate		340211-01	1	1	1	-							
			3A2527-01				1	1	-					
			3A6002-01							1				
11	Control Label		453704-01	1	-									
			4A1613-01		1	-								
			4A2767-01			1	1	1	-					
			4A4394-01							1				
12	R404A Label		4A0960-01	1	1	1	1	1	-					
13	Wiring Label		340012-01	1	-									
			3A1504-01		1	-								
			3A2342-01			1	1	1	-					
			3A6003-01							1				
14	Tag-Warning: Electrical Connection		435005-01	1	1	1	1	1	1					
15	Caution Label (B)		439142-01	1	1	1	1	1	1					
16	Rating Label		4A1671-01	1	1	1	-							
			3A2528-01				1	1	-					
			3A6001-01							1				
17	Fuse Label (GM)		4A1614-01		1	-								
			4A2834-01			1	1	1	-					
			4A4278-01							1				

J. Spout Assembly
F-500BAF
M-1 to A-0



Title: J. Spout Assembly Model: F-500BAF									
Index No.	Description	Material or Model Number	Part Number	Required Number					
				H-0 to M-0	M-1 to A-0				
Spout Assembly			See Section A, item 8, Prior to M-1						
Order Assembly Parts Individually			2A2511A01		1				
1	Switch Bracket		350284-01	-	1				
2	Lever		3A2365-01	-	1				
3	Microswitch		4A2832-01	-	1				
4	Spring		459287-01	-	1				
5	Spout		232636G01	-	1				

K. Accessories & Packaging

F-500BAF

H-0 to A-0

Title: H. Accessories & Packaging Model: F-500BAF												
Index No.	Description	Material or Model Number	Part Number	Required Number								
				H-0 to Q-0	Q-1 to A-0							
1	Instruction Manual		91A2HA10D	1	1							
2	Scoop		4A2246-01	1	1							
3	Leg - Box of 4, Stainless Steel (Option)		4A2113-01	1	-							
	Leg - Box of 4, Painted (Option)		444138-01	1	-							
	Legs		4A2525-01		1							
	Packaging (available only on models in production)		1A0531A06									