



HOSHIZAKI

Parts List

Crescent Cuber

Model

KM-160BWJ



hoshizakiamerica.com

Number: F119-4273
Issued: 11-2019

Auxiliary Codes

KM-160BWJ G-1 April 2017

Auxiliary Code Breakdown

The auxiliary code is the first two characters in the serial number. The first character indicates the year. Years progress or regress in alphabetical order. The series runs from "A" through "V" and the letters "I" and "O" are skipped. The second character indicates significant part changes within a year. Base is "0" and this number advances for each change. In cases where there is a letter in parentheses, this designates the month. This is the last character in the serial number. The series runs from "(A)" through "(M)" and the letter "(I)" is skipped. This designation is only included when identifying a parts change within an auxiliary code.

Note About Ordering Parts

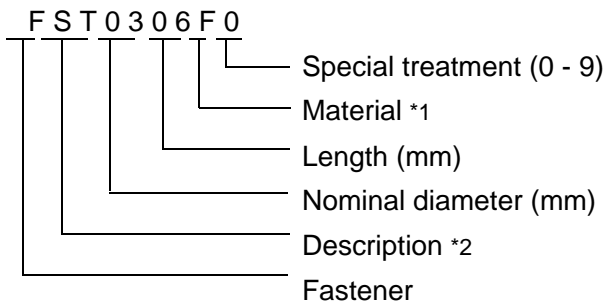
Most assemblies cannot be ordered as complete units; parts in the assemblies generally must be ordered separately.

MARKS LOCATED UNDER THE AUXILIARY CODE

- = Part deleted.

FASTENER PART NUMBER

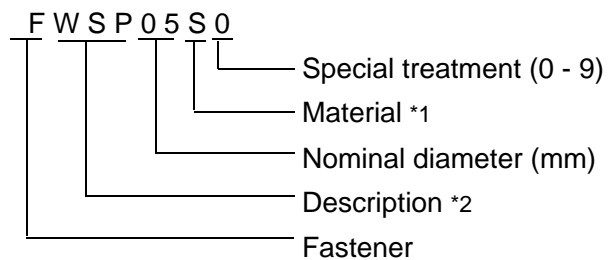
SCREWS



*1

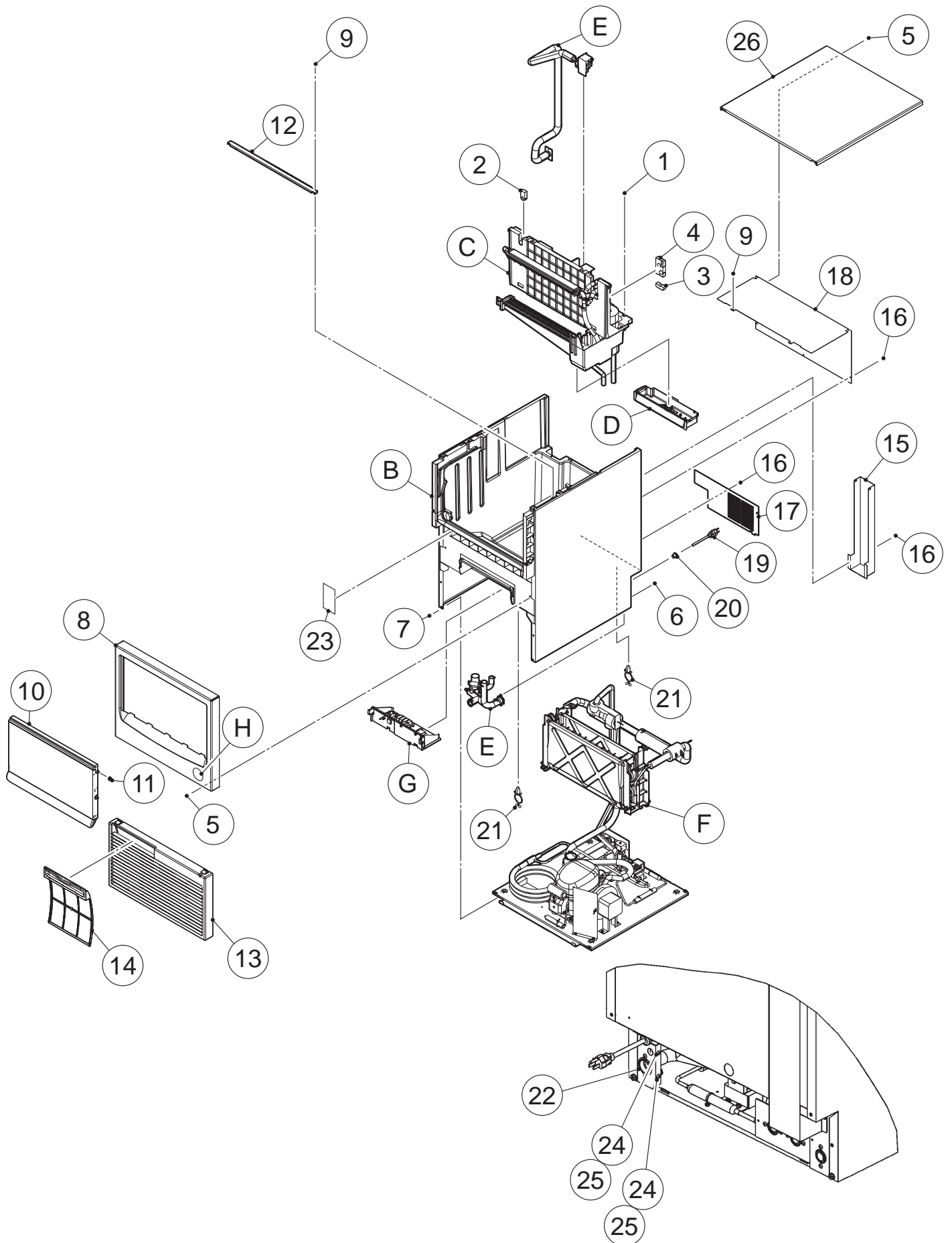
F: Steel
S: Austenitic stainless steel
M: Martensitic stainless steel
B: Copper alloy
P: Polycarbonate
N: Polyamide
V: PVC
A: ABS
X: Polyacetal
L: Aluminum

NUTS & WASHERS



*2

First letter
S: Machine screw
T: Tapping screw
M: Wood screw
B: Bolt
W: Washer
N: Nut

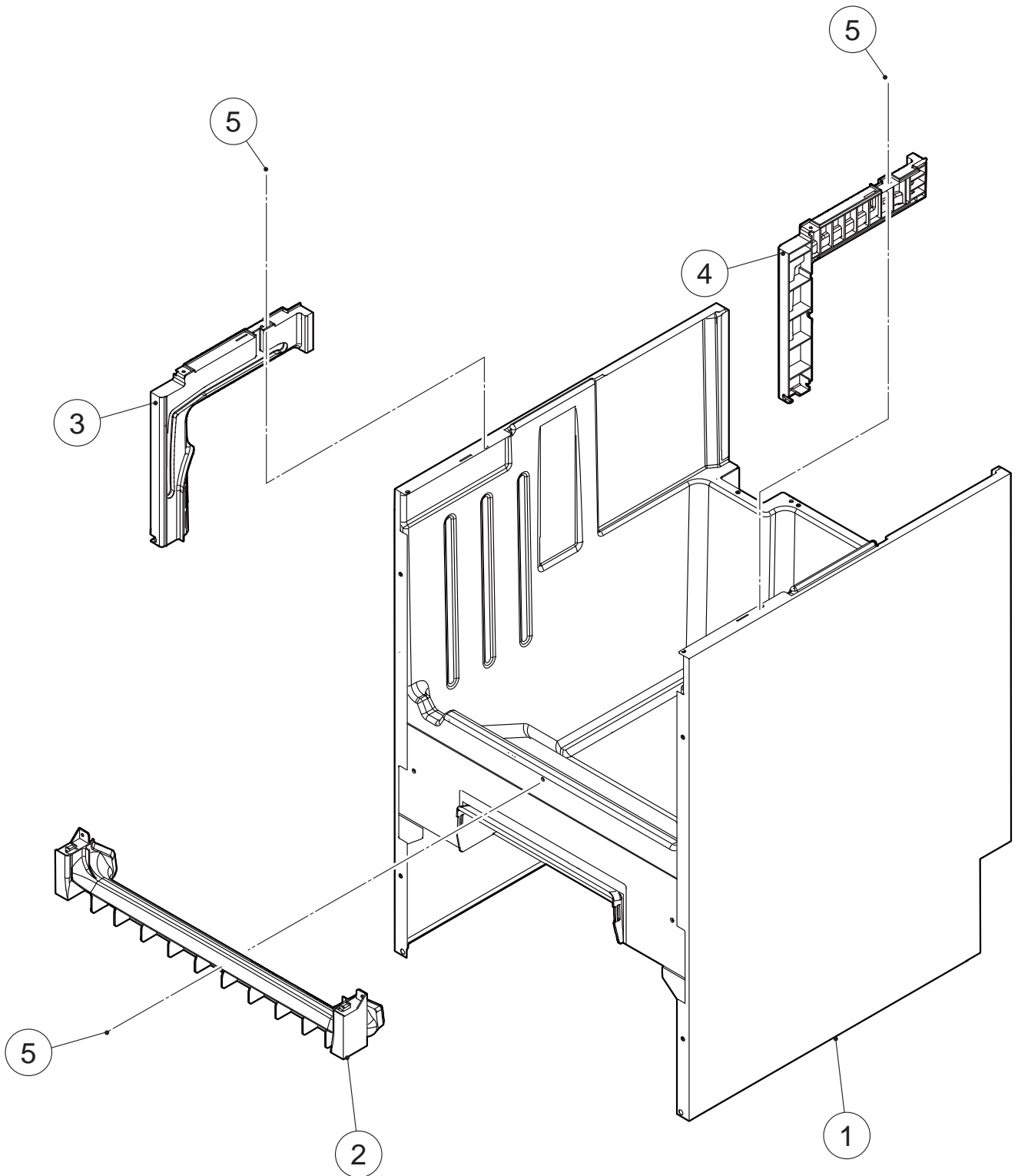


HA

MODEL: KM-160BWJ							
TITLE: A. ICE CUBER ASSY							
INDEX NO.	DESCRIPTION	MATERIAL OR MODEL NUMBER	PART NUMBER	REQ'D NUMBER			
				G-1			
B	BODY		124931A01	1			
C	ICE MAKING MECHANISM ASSY		124937A01	1			
D	MECHANICAL BIN SWITCH		371151A01	1			
E	WATER CIRCUIT ASSY		270882A01	1			
F	REFRIGERATION CIRCUIT		124938A01	1			
G	CONTROL BOX ASSY		252005A09	1			
H	LABEL LOCATION		270886A01	1			
J	ACCESSORIES		A03348-01	1			
1	TRUSS HEAD TAPPING SCREW T2	SUS 4x12	FT20412M0	2			
2	GROMMET/PIPE(C)		470311-01	1			
3	GROMMET/PIPE(B)		470310-01	1			
4	GROMMET/PIPE(A)		470309-01	1			
5	T2 TRUSS HEAD SCREW	SUS 4x8	FT20408M0	6			
6	T2 TRUSS HEAD SCREW	SUS 4x10	FT20410M0	4			
7	HEX. TAPPING SCREW W - FLANGE	6x16	P01572-01	4			
8	FRONT PANEL		384404G01	1			
9	TRUSS HEAD TAPPING SCREW T2	SUS 4x10	FT20410S0	6			
10	DOOR	Replace together with 4 pieces of No.11 COLLAR	369051G01	1			
11	COLLAR		481481P02	4			
12	BRACE - RAIL		384405M01	1			
13	LOUVER		117635-01	1			
14	AIR FILTER		250727G01	1			
15	COVER - PIPE		368305-02	1			
16	T2 TRUSS HEAD SCREW	4x8	FT20408F0	6			
17	REAR COVER		371349M01	1			
18	REAR PANEL		370654M03	1			
19	POWER SUPPLY CORD	KP-301+SJT 16AWGX3C	P00004-01	1			
20	BUSHING	SR-7K-2	420472-02	1			
21	CLAMP		427902-02	4			
22	INSULATION/DRAIN		4Y4319Z01	1			
23	SEAL - OVERFLOW		4Y4321P01	1			
24	TRUSS HEAD SCREW	SUS 4x8	FST0408S0	2			

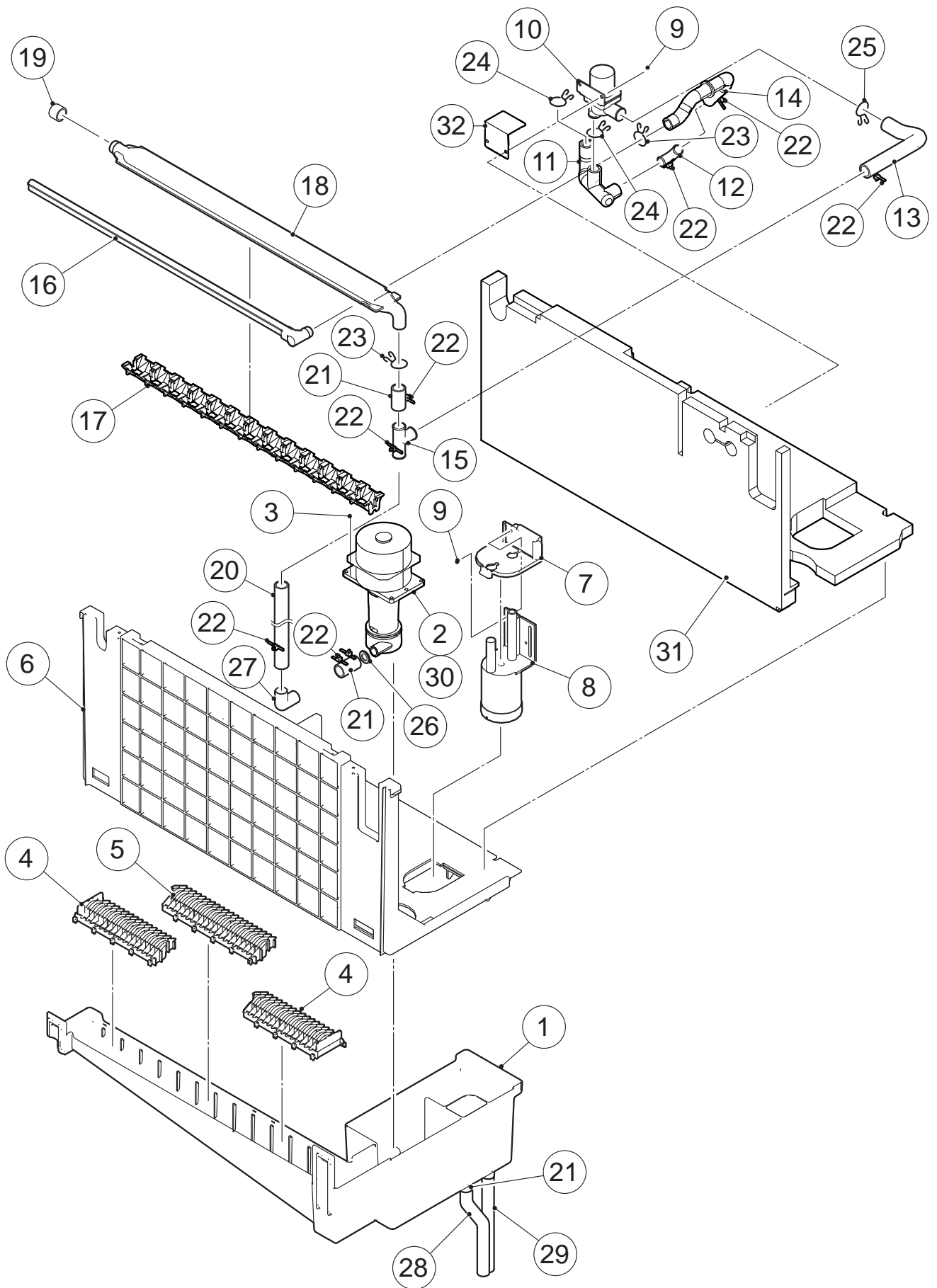
HA

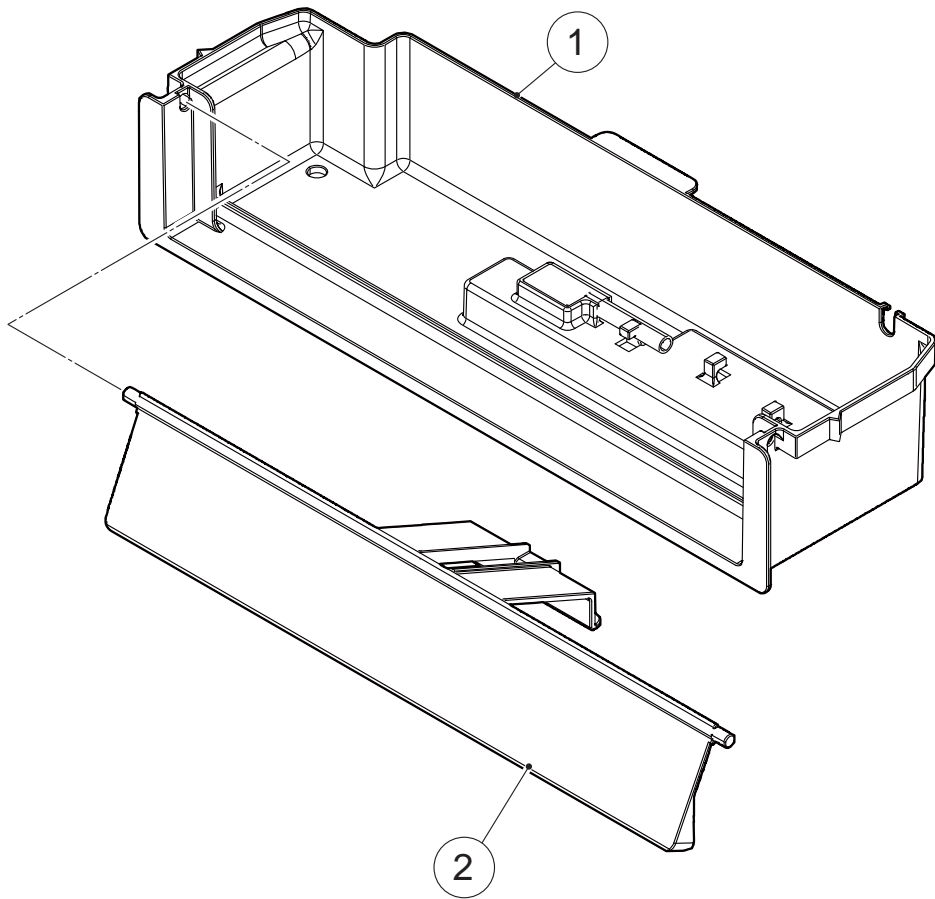
MODEL: KM-160BWJ		TITLE: A. ICE CUBER ASSY					
INDEX NO.	DESCRIPTION	MATERIAL OR MODEL NUMBER	PART NUMBER	REQ'D NUMBER			
				G-1			
25	SPRING WASHER		FWSP04S0	2			
26	TOP PANEL ASSY		389182A09	1			



HA

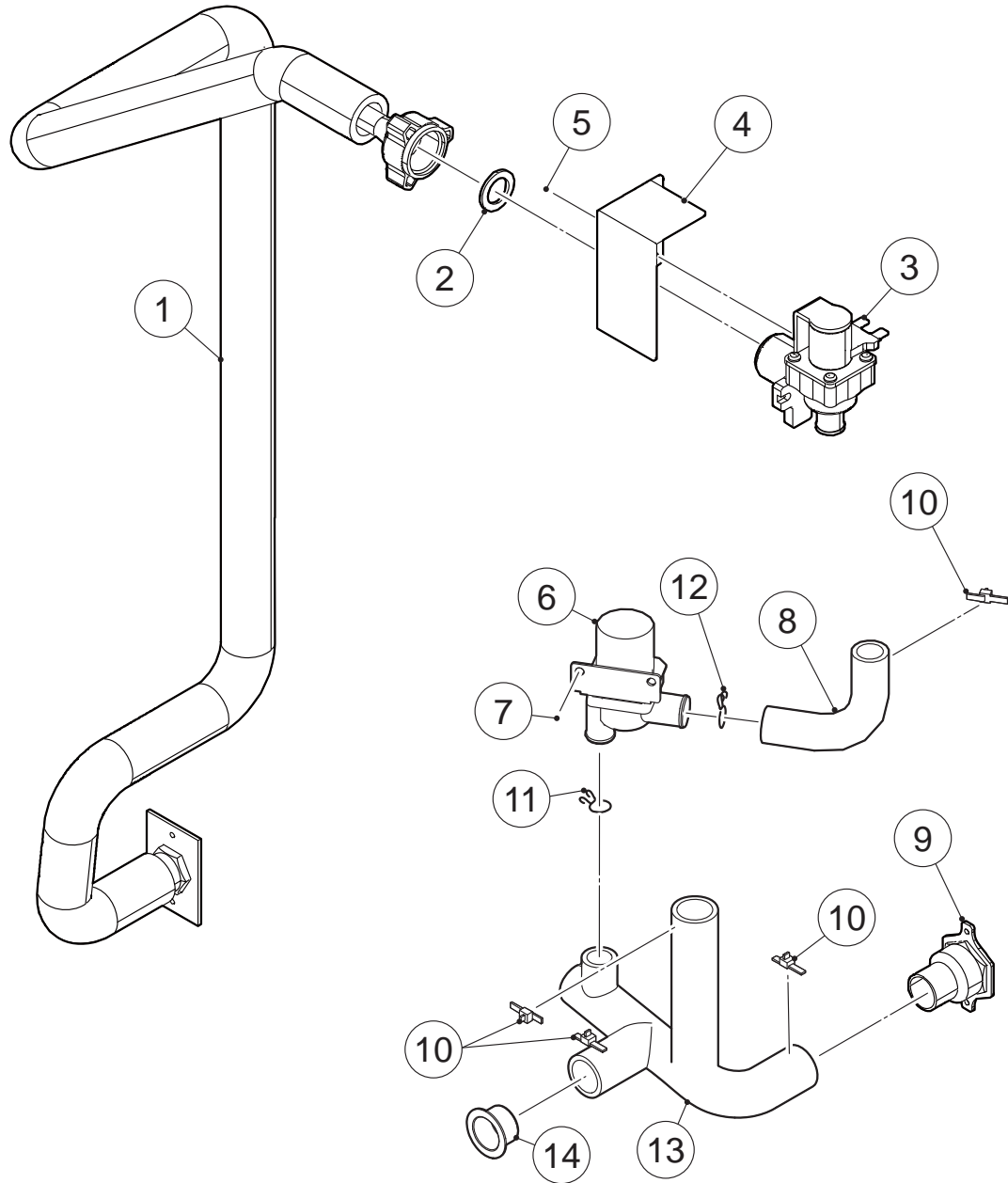
MODEL: KM-160BWJ		TITLE: B. BODY					
INDEX NO.	DESCRIPTION	MATERIAL OR MODEL NUMBER	PART NUMBER	REQ'D NUMBER			
				G-1			
1	BODY ASSY		124934G02	1			
2	FRONT FRAME		250745-01	1			
3	RAIL (L)		124933P01	1			
4	RAIL (R)		124932P01	1			
5	TRUSS HEAD TAPPING SCREW T2		FT20410S0	3			

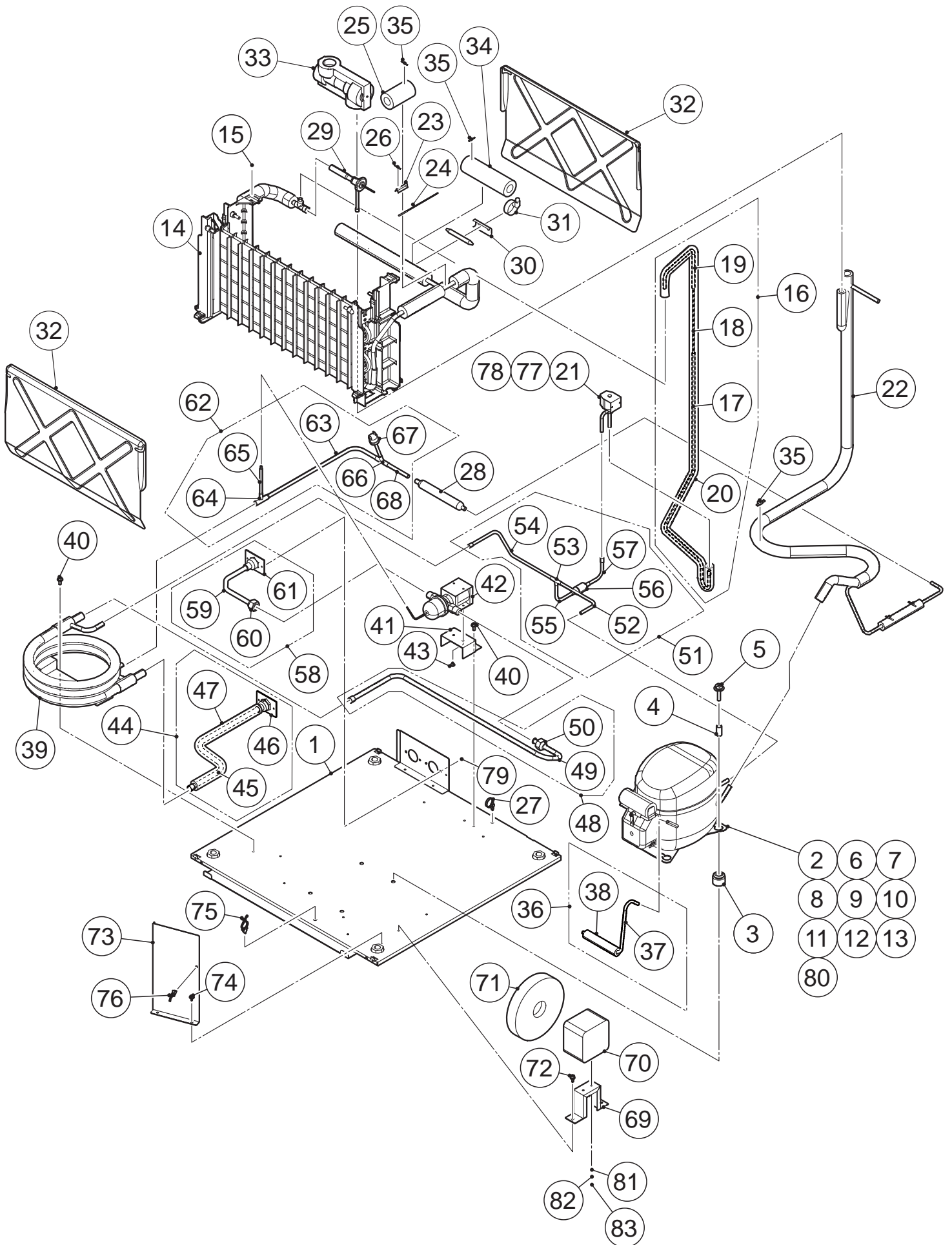




HA

MODEL: KM-160BWJ		TITLE: D. MECHANICAL BIN SWITCH					
INDEX NO.	DESCRIPTION	MATERIAL OR MODEL NUMBER	PART NUMBER	REQ'D NUMBER			
				G-1			
1	MECHANICAL SWITCH CASE		371153G01	1			
2	DETECTOR		371152G01	1			



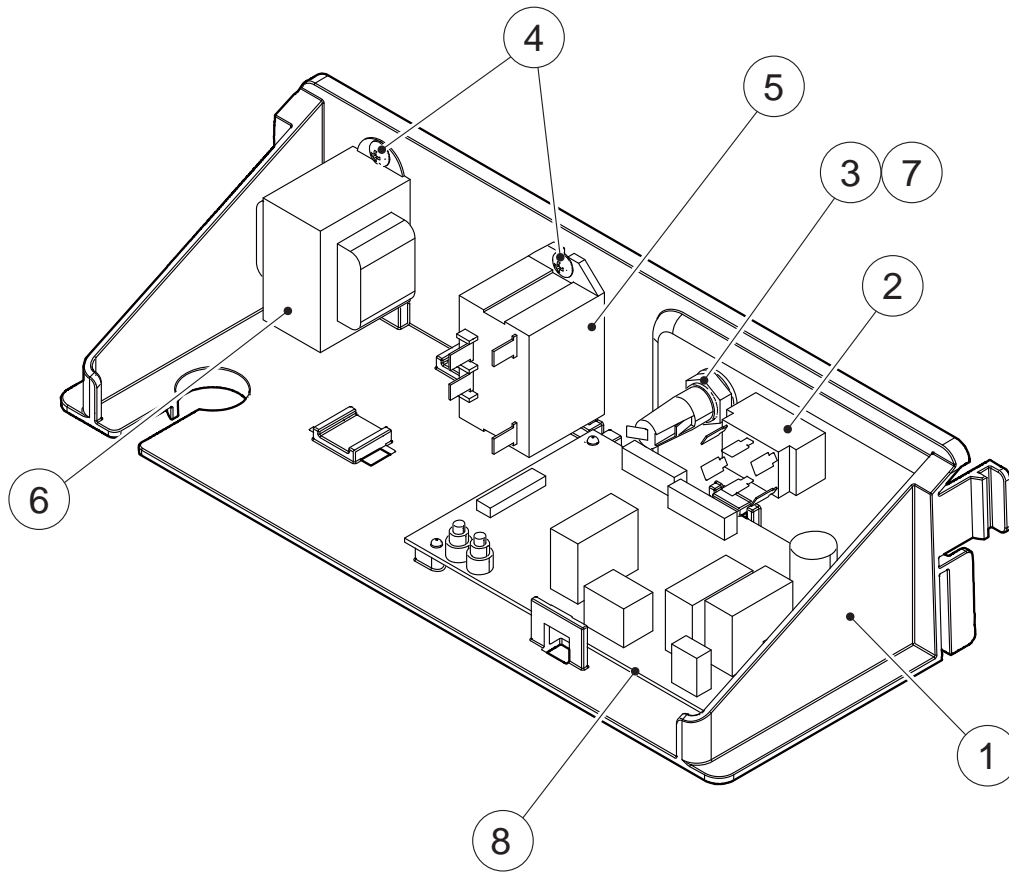


HA

MODEL: KM-160BWJ				TITLE: F. REFRIGERATION CIRCUIT			
INDEX NO.	DESCRIPTION	MATERIAL OR MODEL NUMBER	PART NUMBER	REQ'D NUMBER			
1	BASE		371350G01	1			
2	COMPRESSOR		P04286-01	1			
3	RUBBER GROMMET		P04000-01	4			
4	SLEEVE		P04001-01	4			
5	BOLT	8x35	436206-03	4			
6	TERMINAL COVER		P02814-01	1			
7	PROTECTOR		P04290-01	1			
8	PROTECTOR RETAINER		P02815-01	1			
9	START CAPACITOR		P04288-01	1			
10	BRACKET CAPACITOR		P04289-01	1			
11	STARTING RELAY		P04291-01	1			
12	SCREW		P00840-01	1			
13	SELF TAPPING SCREW M4-11		P02615-01	1			
14	EVAPORATOR ASSY		270883G01	1			
15	TRUSS HEAD TAPPING SCREW T2	SUS 4x12	FT20412M0	2			
16	COPPER TUBE (H) - HOT GAS		255428G01	1			
17	COPPER TUBE (H1) - HOT GAS		255428M01	1			
18	CAPILLARY TUBE		7K2032020	1			
19	COPPER TUBE (H2) - HOT GAS		255428M03	1			
20	INSULATION TUBE		H71020H12	1			
21	VALVE BODY		4A3275-01	1			
22	HEAT EXCHANGER		270884G01	1			
23	HOLDER-THERMISTOR		436455-01	1			
24	THERMISTOR		P00027-01	1			
25	INSULATION-THERMISTOR		471010Z01	1			
26	TIE		7920-0002	3			
27	PUSH MOUNT TIE		436156-01	1			
28	DRIER		P00026-01	1			
29	EXPANSION VALVE		P00318-01	1			
30	HOLDER - EXPV		451267-01	1			
31	CLAMP		443461-01	1			
32	SEPARATOR		250749-03	2			
33	COVER-EXPANSION VALVE		369332Z01	1			
34	INSULATION TUBE (A)		H73858200	1			

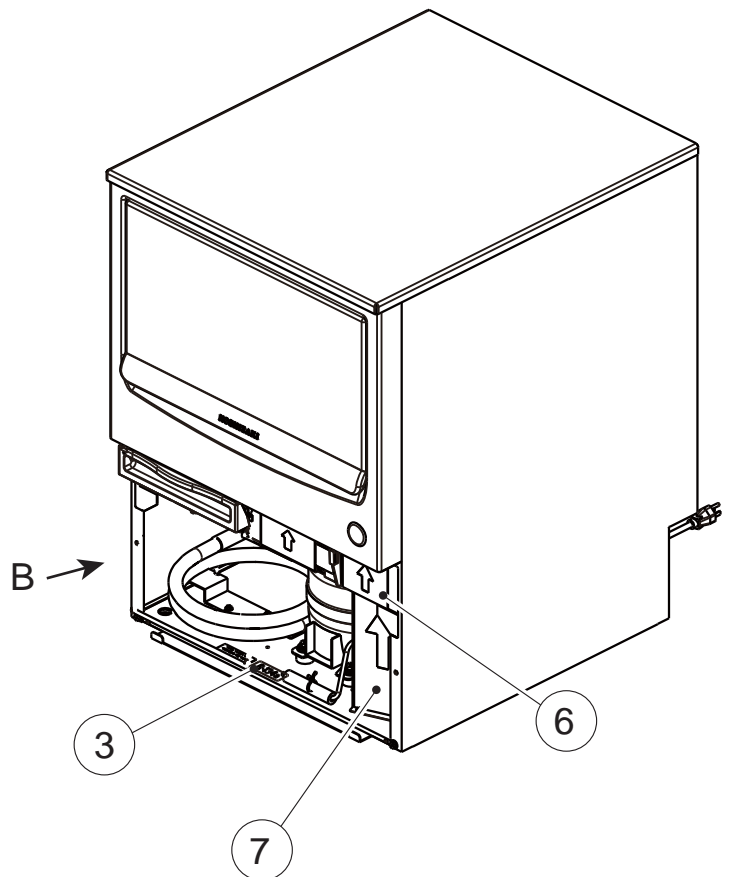
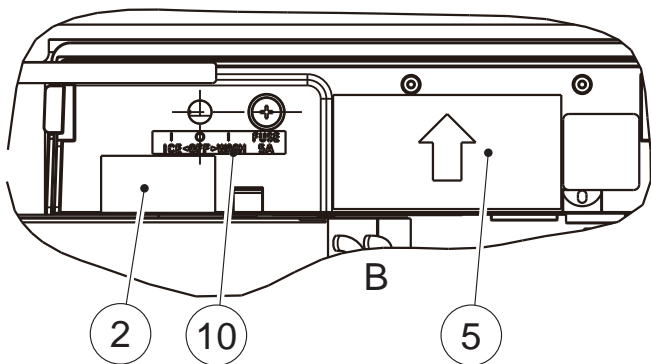
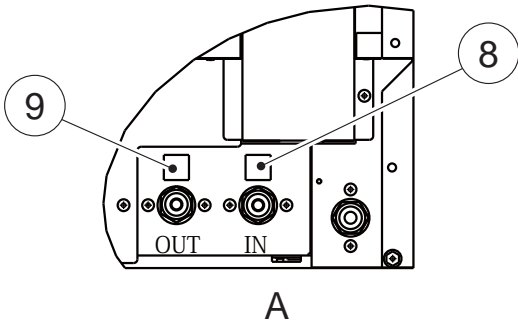
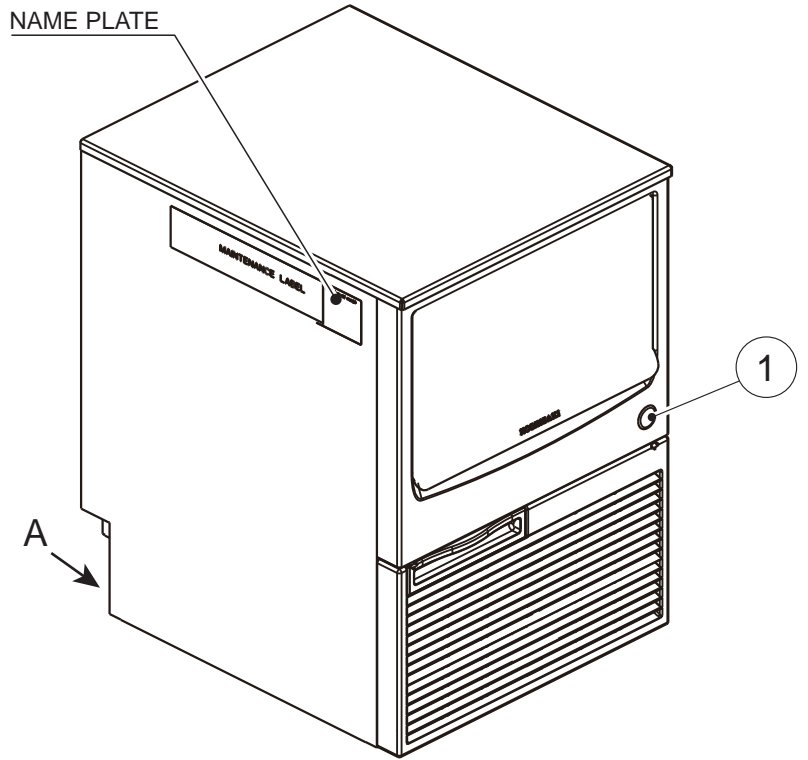
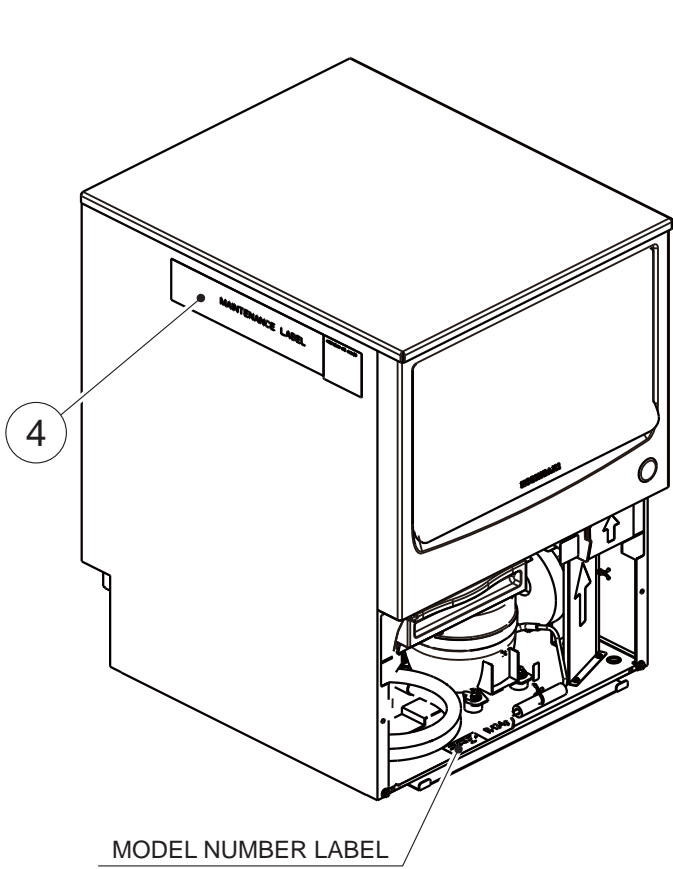
HA

MODEL: KM-160BWJ		TITLE: F. REFRIGERATION CIRCUIT					
INDEX NO.	DESCRIPTION	MATERIAL OR MODEL NUMBER	PART NUMBER	REQ'D NUMBER			
35	NYLON TIE		7920-0010	5			
36	COPPER TUBE (A)/PROCESS		384399G01	1			
37	COPPER TUBE (A)/PROCESS		384399M01	1			
38	INSULATION TUBE		H71020100	1			
39	CONDENSER - WATER COOLED		P01539-01	1			
40	FLANGE BOLT (S-TITE)	5x12	FTQ0512F0	4			
41	BRACKET - WR		371348M01	1			
42	WATER REGULATOR		P04020-01	1			
43	TRUSS HEAD SCREW	SUS 4X6	FST0406S0	2			
44	COPPER TUBE (B)		384400G01	1			
45	COPPER TUBE (B)		384400M01	1			
46	INLET FITTING		471004G01	1			
47	INSULATION TUBE		H71323400	1			
48	COPPER TUBE (C)		384401G01	1			
49	COPPER TUBE (C)		384401M01	1			
50	FLARE NUT		448082F01	1			
51	COPPER TUBE (D)		384402G01	1			
52	COPPER TUBE (D)		384402M01	1			
53	TEE - 6.4		417394-01	1			
54	COPPER TUBE (D)		384402M02	1			
55	COPPER TUBE (D)		384402M03	1			
56	STRAINER		P00008-01	1			
57	COPPER TUBE (D)		384402M04	1			
58	COPPER TUBE (E)		371356G01	1			
59	COPPER TUBE (E1)		371356M01	1			
60	FLARE NUT		448082F01	1			
61	INLET FITTING		471004G01	1			
62	COPPER TUBE (F)		384403G01	1			
63	COPPER TUBE (F)		384403M01	1			
64	TEE		420041-05	1			
65	COPPER TUBE (B) - CAPILLARY		446047-02	1			
66	TEE		420041-02	1			
67	PRESSURE SWITCH		463180-02	1			
68	COPPER TUBE (F)		384403M02	1			



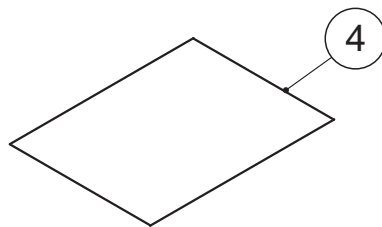
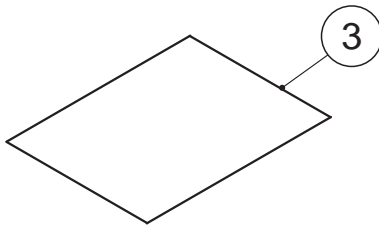
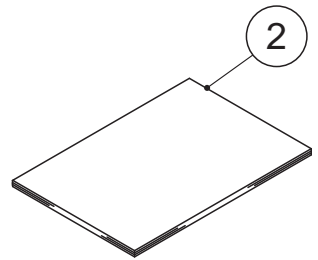
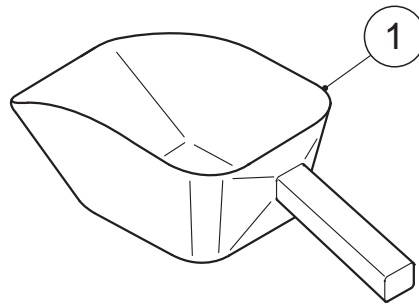
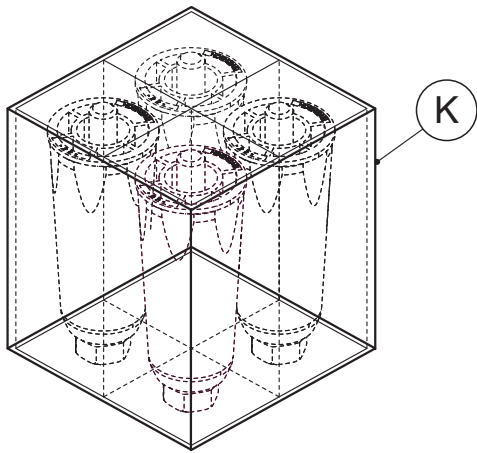
HA

MODEL: KM-160BWJ		TITLE: G. CONTROL BOX ASSY					
INDEX NO.	DESCRIPTION	MATERIAL OR MODEL NUMBER	PART NUMBER	REQ'D NUMBER			
				G-1			
1	CONTROL BOX		117624-01	1			
2	TOGGLE SWITCH	KND-203	P00033-01	1			
3	FUSE HOLDER	BF115	P00014-01	1			
4	T2 TRUSS HEAD SCREW	SUS 4x8	FT20408M0	2			
5	POWER RELAY	G7L-1A-TUB	449000-01	1			
6	TRANSFORMER		3A4395-01	1			
7	FUSE		P01143-01	1			
8	CONTROLLER BOARD	HKM2006V003	P01771-02	1			



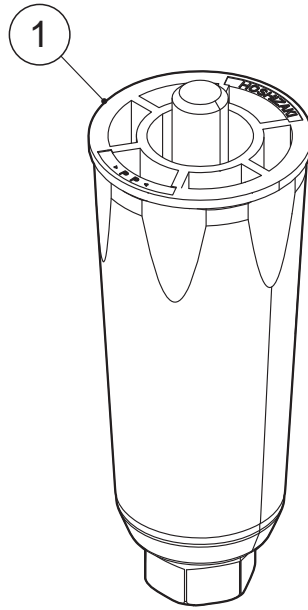
HA

MODEL: KM-160BWJ		TITLE: H. LABEL LOCATION					
INDEX NO.	DESCRIPTION	MATERIAL OR MODEL NUMBER	PART NUMBER	REQ'D NUMBER			
				G-1			
1	LABEL - PENGUIN		468184-01	1			
2	CAUTION LABEL		464507-01	1			
3	LABEL - R134A		444463-01	1			
4	MAINTENANCE LABEL		384500L01	1			
5	CAUTION LABEL - SERVICE		370640L01	1			
6	LABEL - ALARM		370310L01	1			
7	LABEL - CONTROL BOARD		370605L02	1			
8	LABEL - INLET		418029-04	1			
9	LABEL - OUTLET		418029-05	1			
10	CONTROL LABEL - FUSE		476009L01	1			



HA

MODEL: KM-160BWJ		TITLE: J. ACCESSORIES					
INDEX NO.	DESCRIPTION	MATERIAL OR MODEL NUMBER	PART NUMBER	REQ'D NUMBER			
				G-1			
K	LEG SET - UNC		472736A01	1			
1	SCOOP		1H4123P02	1			
2	INSTRUCTION MANUAL		L1F116101	1			
3	WARRANTY CERTIFICATE		2A4016-01	1			
4	REGISTRATION CARD		2A2894-01	1			



HA

MODEL: KM-160BWJ		TITLE: K. LEG SET - UNC					
INDEX NO.	DESCRIPTION	MATERIAL OR MODEL NUMBER	PART NUMBER	REQ'D NUMBER			
				G-1			
1	LEG-UNC		371053G01	4			